

TM11-6625-2411-34P

TECHNICAL MANUAL

DIRECT SUPPORT AND GENERAL SUPPORT MAINTENANCE

REPAIR PARTS AND SPECIAL

TOOLS LISTS

(INCLUDING DEPOT MAINTENANCE REPAIR PARTS

AND SPECIAL TOOLS)

TEST SET, SIGNAL CONVERTER AN/ASM-416

(FSN 6625-463-4013)

HEADQUARTERS, DEPARTMENT OF THE ARMY
JUNE 1972

**Direct Support and General Support Maintenance
Repair Parts and Special Tools Lists
(Including Depot Maintenance Repair
Parts and Special Tools)
TEST SET, SIGNAL CONVERTER
AN/ASM-416**

(FSN 6625-463-4013)

(CURRENT AS OF 1 MARCH 1972)

	Page
SECTION I. INTRODUCTION.....	1-1
SECTION II. REPAIR PARTS LIST.....	2-1
Group 01 Case Assembly.....	2-1
0101 Signal Converter Test Set.....	2-1
02 Cable Assemblies.....	2-1
03 Structural and Mechanical.....	2-2
0301 Circuit Card Extractor.....	2-2
0302 Top, Storage Cover.....	2-2
0303 Main Chassis.....	2-3
04 Circuit Card Assemblies.....	2-4
0401 Tachometer/EGT/Deoverride Generator Circuit Card (Solid State Devices, Capacitors, and Connectors).....	2-4
0402 Tachometer/EGT/Deoverride Generator Circuit Card (Resistors).....	2-5
0403 Hook Delay Generator and Lamp Driver 400 Hz, 10 VDC Supply Card (Solid State Devices, Capacitors, and Connectors).....	2-6
0404 Hook Delay Generator and Lamp Driver 400 Hz, 10 VDC Supply Card (R e s i s t o r s)	2 - 7
05 Electrical Components.....	2-9
0501 Control Panel (Lamps, Sockets, Knobs and Switches).....	2-9
0502 Control Panel (Variable Controls Attaching Hardware and Knobs).....	2-10
0503 Main Chassis (Solid State Devices, Relays, Transformer and Attaching H a r d w a r e)	2 - 1 2
0504 Electrical Component Board (Resistors and Capacitors).....	2-14
0505 Electrical Component Board (Terminal Studs).....	2-14
0506 Magnasyn Assembly.....	2-14
SECTION III. SPECIAL TOOLS LIST.....	3-1
SECTION IV. INDEX-FEDERAL STOCK NUMBER AND REFERENCE NUMBER CROSS- REFERENCE TO FIGURE AND ITEM NUMBER.....	4-1

SECTION I
INTRODUCTION

1. Scope

This manual lists repair parts required for the performance of direct support, general support, and depot maintenance of the Test Set, Signal Converter AN/ASM-416.

2. General

a. Repair Parts List—Section II. A list of repair parts authorized at the direct support, general support, and depot categories for the performance of maintenance. Parts Lists are composed of functional groups in ascending numerical sequence, with parts in each group listed in figure and item number sequence.

b. Special Tools List—Section III. A list of special tools, test and support equipment authorized for the performance of maintenance at the direct support, general support, and depot categories.

c. Federal Stock Number and Reference Number Index—Section IV. A list, in ascending numerical sequence, of all Federal stock numbers appearing in the listing, followed by a list, in alphanumerical sequence of all reference numbers appearing in the listing. Federal stock numbers and reference numbers are cross-referenced to each figure and item number appearance.

3. Explanation of Columns

The following provides an explanation of columns found in the tabular listings.

a. Source, Maintenance and Recoverability Codes (SMR).

(1) *Source code.* Indicates the source for the listed items. Source codes are—

<i>Code</i>	<i>Explanation</i>
P	Repair parts, special tools, and test equipment supplied from the GSA/DSA, or Army supply system and authorized for use at indicated maintenance categories.
P2	Repair parts, special tools, and test equipment which are procured and stocked

<i>Code</i>	<i>Explanation</i>
	for insurance purposes because the combat or military essentiality of the end item dictates that a minimum quantity be available in the supply system.
P9	Assigned to items which are NSA design controlled: Unique repair parts, special tools, test, measuring and diagnostic equipment, which are stocked and supplied by the Army COMSEC logistic system, and which are not subject to the provisions of AR 380-41.
P10	Assigned to items which are NSA design controlled: Special tools, test, measuring and diagnostic equipment for COMSEC support, which are accountable under the provisions of AR 380-41, and which are stocked and supplied by the Army COMSEC logistics system.
M	Repair parts, special tools, and test equipment which are not procured or stocked, but are to be manufactured at indicated maintenance levels.
A	Assemblies which are not procured or stocked as such, but are made up of two or more units. Such component units carry individual stock numbers and description, are procured and stocked separately and can be assembled to form the required assembly at indicated maintenance categories.
X	Parts and assemblies that are not procured or stocked because the failure rate is normally below that of the applicable end item or component. The failure of such part or assembly should result in retirement of the end item from the supply system.
X1	Repair parts which are not procured or stocked. The requirement for such items will be filled by the next higher assembly or component.
X2	Repair parts, special tools, and test equipment which are not stocked and have no foreseen mortality. The indicated main-

Code	<i>Explanation</i>
	tenance category requiring such repair parts will attempt to obtain same through cannibalization or salvage. The item may be requisitioned, with exception data, from the end item manager for immediate use.
G	Major assemblies that are procured with PEMA funds for initial issue only as exchange assemblies at DS and GS category. These assemblies will not be stocked above DS and GS category or returned to depot supply level.

(2) *Maintenance code.* Indicates the lowest category of maintenance authorized to install the repair part and/or use the special tool or test equipment for each application. Capabilities of higher maintenance categories are considered equal or better. Maintenance codes are-

code	<i>Explanation</i>
C -----	Crew/operator
O -----	Organizational maintenance
F -----	Direct support maintenance
H -----	General support maintenance
D -----	Depot maintenance

(3) *Recoverability code.* Indicates whether unserviceable items should be returned for recovery or salvage. Items not coded are nonrecoverable. Recoverability codes are-

code	<i>Explanation</i>
R	Repair parts (assemblies and components), special tools, and test equipment which are considered economically repairable at direct and general support maintenance categories. When the item is no longer economically repairable, it is normally disposed of at the GS category. When supply considerations dictate, some of these repair parts may be listed for automatic return to supply for depot category repair as set forth in AR 710-1. When so listed, they will be replaced by supply on an exchange basis.
S	Repair parts, special tools test equipment, and assemblies which are economically repairable at DS and GS activities and which normally are furnished by supply on an exchange basis. When items are determined by a GSU to be uneconomically repairable, they will be evacuated to a depot for evaluation and analysis before final disposition.
T	High-dollar value recoverable repair parts, special tools, and test equipment which are subject to special handling and are

Code	<i>Explanation</i>
	issued on an exchange basis, Such items will be repaired or overhauled at depot maintenance activities only. No repair may be accomplished at lower categories.
U	Repair parts, special tools, and test equipment specifically selected for salvage by reclamation units because of precious metal content, critical materials, high-dollar value, or reusable casings or castings.

b. Federal Stock Number. Indicates the Federal stock number assigned to the item and will be used for requisitioning purposes.

c. Description. Indicates the Federal item name and a minimum description required to identify the item. The last line indicates the reference number followed by the applicable Federal supply code for manufacturer (FSCM) in parentheses. The FSCM is used as an element in item identification to designate manufacturer, distributor, or Government agency, etc., and is identified by SB 708-42.

d. Unit of Measure (U/M). Indicates the standard or basic quantity by which the listed item is used in performing the actual maintenance function. This measure is expressed by a two-character alphabetical abbreviation, e.g., ea., in., pr., etc. When the unit of measure differs from the unit of issue, the lowest unit of issue that will satisfy the required units of measure will be requisitioned.

e. Quantity Incorporated in Unit. Indicates the quantity of the item used in the breakout shown on the figure, which is prepared for a functional group, subfunctional group, or an assembly. A "V" appearing in this column in lieu of a quantity indicates that no specific quantity is applicable, e.g., shims, spacers, etc.

f. 30-Day DS/GS Maintenance Allowances. The allowance columns are divided into three subcolumns. An asterisk in these columns opposite the first appearance, and each subsequent appearance, of each item indicates the item is authorized on an "as required" basis. Repair parts stockage at the DS/GS categories will be based on demand and determined in accordance with AR 710-2

g. One-Year Allowances per 100 Equipments/ Contingency Planning Purposes. This column indicates items required to support 100 equipments for 1 year. An asterisk opposite the first appearance and each subsequent appearance of each item indicates the range of items required.

h. Depot Maintenance Allowance per 100 Equipments. This column indicates items authorized for depot maintenance of 100 equipments. An asterisk opposite the first appearance and each subsequent appearance of each item indicates the range of items authorized on an "as required" basis.

i. Illustration. This column is divided as follows :

(1) **Figure number.** Indicates the figure number in which the item is shown.

(2) **Item number.** Indicates the callout number used to reference the item on the illustration.

4. Special Information

a. Material required to manufacture items source coded "M" are listed in the description column of the repair parts tabular listing of this manual.

b. Items required for assembly of items source coded "A" are listed immediately following the item to be assembled.

c. Parts which require manufacture or assembly at a category higher than that authorized for installation will indicate in the source column the higher category (e.g. AH).

d. The following publications are applicable to the Test Set, Signal Converter AN/ASM-416 and its components :

TM 11-5821-288-34P Direct Support, General Support, and Depot Maintenance Repair Parts and Special Tool Lists for Signal Data Converter CV-2808(V)1/ASH-19 and CV-2808(V)2/ASH-19. (To be published.)

TM 11-5821-289-34P Direct Support, General Support, and Depot Maintenance Repair Parts and Special Tool Lists for Signal Data Converter CV-2809/ASH-19. (To be published.)

TM 11-5821-290-34P Direct Support, General Support, and Depot Maintenance Repair

Parts and Special Tool Lists for Signal Data Converter CV-2807(V)1/ASH-19 and CV-2807(V)2/ASH-19. (To be published.)

TM 11-6625-2411-12 Organizational Maintenance Manual for Signal Converter Test Set AN/ASM-416.

TM 11-6625-2411-20P Organizational Maintenance Repair Parts and Special Tools Lists for Signal Converter Test Set AN/ASM-416.

5. How to Locate Repair Parts

a. When Federal stock number or reference number is unknown-

(1) **First.** Using the table of contents, determine the functional subgroup within which the repair parts belongs. This is necessary since illustrations prepared for functional subgroups and listings are divided into the same groups.

(2) **Second.** Find the illustration covering the functional subgroup to which the repair parts belongs.

(3) **Third.** Identify the repair parts on the illustration and note the figure and item number of the repair part.

(4) **Fourth.** Using the repair parts listing, find the functional subgroup to which the repair part belongs and locate the figure and item number noted on the illustration.

b. When Federal stock number or reference number is unknown-

(1) **First.** Using the index of Federal stock numbers and reference numbers, find the pertinent Federal stock number or reference number. This index is in ascending FSN sequence followed by a list of reference numbers in ascending alphabetic sequence, cross-referenced to the figure number and item number.

(2) **Second.** Using the repair parts listing, find the functional subgroup of the repair part and the figure number and item number referenced in the index of Federal stock numbers and reference numbers.

6. Abbreviations

Abbreviation	Explanation
ac	across
al	aluminum
aly	alloy
amb	amber
b	base
bl	blind
blk	black
blu	blue
brn	brown
brs	brass
bshg	bushing
btnhd	button head
cd	-card
cd pl	cadmium plate
chr	chromium
ckt	circuit
cl	closed
clr	Clear
cmpnt	component
condn	condition
conn	connector
cres	corrosion-resisting steel
cs	carbon steel
cskh	countersunk head
dbl	double
dia	diameter
dial pth	diallyl phthalate
diel	dielectric
egt	exhaust gas temperature
elec	electrical
ext	external
fl	flat
flg	flange
fltg	floating
freq	frequency
gra	gray
grn	green
h	hard
h	hish
hd	head
hex	hexagon
hl	helical
hydr	hydraulic
Hz	Hertz
id	inside diameter
ident	identification
in	inch
incand	incandescent
intl	internal
intrf	interference
lg	long
lkg	locking
lt	light

Abbreviation	Explanation
mach	machine
mdgt	midget
mdm	medium
met	metal
mstr	moisture
mtg	mounting
nat	natural
nc	National coarse (thread)
nef	National extra fine (thread)
nf	National fine (thread)
nmag	nonmagnetic
nom	nominal
np	National pipe
ns	National special (thread)
nyl	nylon
od	outside diameter
orn	orange
pl	plate
plstc	plastic
pnl	panel
ppr	paper
prcsn	precision
prefmd	preformed
psvt	passivate
rad	radio
rbr	rubber
rdc	reduced
rec	recess
rlv	relieve
rnd	round
rng	ring
rtng	retaining
rvt	rivet
sc	single contact
scr	screw
seg	sealing
sh	sheet
shldr	shoulder
sld	sealed
slflkg	self-locking
slfse	self-sealing
sld	slotted
slv	sleeve
sol	solid
sp	special purpose
sp	single pole
spr	spring
sst	stainless steel
stl	Steel
strd	stranded
synth	synthetic
t	teeth
tach	tachometer
tfl	teflon
thd	thread

<i>Abbreviation</i>	<i>Explanation</i>
therm	thermal
thk	thick
trh	truss head
unc	unified coarse thread
unef	unified extra fine thread
unf	unified fine thread
unfin	unfinished
univ	universal
unjc	unified coarse thread (MIL-S-8879)
v	voltage
vdc	direct current volts
vio	violet
w	wide
wht	white
wshr	washer

Abbreviation	Explanation
ww	Wire wound
xistr	transistor
yel	yellow

7. Recommendations for Maintenance
Publications Improvements

The reporting of errors, omissions, and recommendations for improving this publication by the individual user is encouraged. Reports should be submitted on DA **Form 2028 (Recommended Changes to Publications) and forwarded direct to Commanding General, US Army Electronics Command, ATTN : AMSEL-MA-A, Fort Monmouth, N.J. 07703**

SECTION II REPAIR PARTS FOR DIRECT SUPPORT, GENERAL SUPPORT, AND DEPOT MAINTENANCE

(1) SMR CODE	(2) FEDERAL STOCK NUMBER	(3) DESCRIPTION USABLE ON CODE	(4) UNIT OF MEAS	(5) QTY INC IN UNIT	(6) 30-DAY DS MAINT ALLOWANCE			(7) 7-DAY GS MAINT ALLOWANCE			(8) 1 YR ALW PER EQUIP CATGORY	(9) DEPOT MAINT ALW PER 100 EQUIP	(10) ILLUSTRATIONS	
					(a) 1-20	(b) 21-50	(c) 51-100	(a) 1-20	(b) 21-50	(c) 51-100			(11) FIG NO	(12) ITEM NO OR REFERENCE DESIGNATION
GROUP 01 CASE ASSEMBLY														
X		CA TEST SET D24330 (98376)	EA	1									1	1
X		CABLE STORAGE ASSEMBLY 2147983-501 (49671)	EA	1									1	2
GROUP 02 CABLE ASSEMBLIES														
AH O		CABLE ASSEMBLY, SP, ELEC 2147984-501 (49671)	EA	1									2	1
P H	6145-162-0252	CABLE, SPECIAL PURPOSE, ELEC S10-1383 (04569)	FT	1			*	*	*	*	*	*	2	2
P H	5935-780-5761	CONNECTOR, PLUG, ELECTRICAL MS3126F16-325 (96906)	EA	1			*	*	*	*	*	*	2	3
P H	5935-726-6504	CONNECTOR, PLUG, ELECTRICAL MS3126F16-32P (96906)	EA	1			*	*	*	*	*	*	2	4
H H		PLATE, IDENT, NYL, 0.015 THK TC228 (59730)	EA	4									2	5
P H	5975-842-5258	STRAP, RTNG, CABLE, NYLON, NAT CLR, 14-750 IN LG, 0.310 IN W, 0.250 IN THK S5T4 (06383)	EA	8			*	*	*	*	*	*	2	6
AH O		CABLE ASSEMBLY, SP, ELEC 2147985-501 (49671)	EA	1									2	7
P H	6145-155-5304	CABLE, SPECIAL PURPOSE, ELEC S10-1381 (04569)	FT	1			*	*	*	*	*	*	2	8
P H	5935-765-5988	CONNECTOR, PLUG, ELECTRICAL MS3126F16-26S (96906)	EA	1			*	*	*	*	*	*	2	9
P H	5935-725-7723	CONNECTOR, PLUG, ELECTRICAL MS3126F16-26P (96906)	EA	1			*	*	*	*	*	*	2	10
AH O		CABLE ASSEMBLY SP, ELEC 2147986-501 (49671)	EA	1									2	11
P H	6145-155-5303	CABLE, SPECIAL PURPOSE, ELE S10-1380 (04569)	FT	1			*	*	*	*	*	*	2	12
P H	5935-724-7592	CONNECTOR, PLUG, ELECTRICAL MS3126F20-41S (96906)	EA	1			*	*	*	*	*	*	2	13
P H	5935-726-6487	CONNECTOR, PLUG, ELECTRICAL MS3126F20-41P (96906)	EA	1			*	*	*	*	*	*	2	14
AH O		CABLE ASSEMBLY SP, ELEC 2147987-501 (49671)	EA	1									2	15
P H	6145-155-5305	CABLE, SPECIAL PURPOSE, ELEC S10-1382 (04569)	FT	1			*	*	*	*	*	*	2	16
P H	5935-724-7577	CONNECTOR, PLUG, ELECTRICAL MS3126F14-12S (96906)	EA	1			*	*	*	*	*	*	2	17
P H	5935-724-7567	CONNECTOR, PLUG, ELECTRICAL MS3126F14-12P (96906)	EA	1			*	*	*	*	*	*	2	18

SECTION II REPAIR PARTS FOR DIRECT SUPPORT, GENERAL SUPPORT, AND DEPOT MAINTENANCE (CONTINUED)

(1) SMR CODE	(2) FEDERAL STOCK NUMBER	(3) DESCRIPTION REFERENCE NUMBER & MFR. CODE	(4) UNIT OF MEAS USABLE ON CODE	(5) QTY INC IN UNIT	(6) 30-DAY GS MAINT ALLOWANCE			(7) 30-DAY GS MAINT ALLOWANCE			(8) 1 YR ALW PER EQUIP CMT/CTY	(9) DEPOT MAINT ALW PER EQUIP	(10) ILLUSTRATIONS	
					(a)	(b)	(c)	(a)	(b)	(c)			(a) FIG NO	(b) ITEM NO. OR REFERENCE DESIGNATION
					1-20	21-50	51-100	1-20	21-50	51-100				
GROUP 03 STRUCTURAL AND MECHANICAL														
P D	5120-433-0851	EXTRACTOR,CKT CD ASSY 2147995-501 (49671)	EA	1	*	*	*	*	*	*	*	3	1	
P H	5305-059-3856	SCREW,MACH,PAN HD,CROSS REC, CRES,PSVT,10-32UNF-2A,1/16 IN LG MS1958-60 (96906)	EA	6	*	*	*	*	*	*	*	4	1	
P H	5310-595-6772	WASHER,FL,MET,RND,CRES,0.219 IN ID,0.488 IN OD,0.049 IN THK MS1975-808 (96906)	EA	6	*	*	*	*	*	*	*	4	2	
P H	5310-933-8120	WASHER,LOCK SPR HLCL,CRES,PSVT, 0.194 IN ID,0.334 IN OD,0.047 IN THK MS33338-138 (96906)	EA	6	*	*	*	*	*	*	*	4	3	
P H	5340-721-4842	CLIP,CHPNT,SPR,STL,CD PL,0.750 IN LG,0.460 IN H,0.400 IN W 100-208-6-6 (99378)	EA	1		*	*	*	*	*	*	4	4	
P H	5320-117-6815	RIVET,SOL,UNIV HD,AL ALY, DIMPLED,3/32 IN DIA,1/4 IN LG MS20470AD3-4 (96906)	EA	2		*	*	*	*	*	*	4	5	
P H	5305-891-3502	FASTENER,SELF CAPTIVATING,SST, PSVT,3/8 IN DIA HD,6-32UNC-2A, 21/32 IN LG 51-18-206-24 (94222)	EA	4		*	*	*	*	*	*	4	6	
P H	5310-957-9002	NUT,SLFLKG,PLATE-TWO LUG,CRES, 0.1380-32UNC-38,0.142 IN ID, 0.682 IN OD,0.171 IN THK NAS1068C06LM (80205)	EA	2		*	*	*	*	*	*	4	7	
P H	5320-117-6817	RIVET,SOL,UNIV HD,AL ALY, DIMPLED,3/32 IN DIA,3/8 IN LG MS20470AD3-6 (96906)	EA	4		*	*	*	*	*	*	4	8	
X		RIVETED ASSEMBLY 2147983-502 (49671)	EA	1								4	9	
MD H		SPACER ASSEMBLY 2147983-503 (49671)	EA	2								4	10	
MD H		INSERT,FLOATING KNK0632 (29372)	EA	2								4	11	
P H	5340-411-9105	INSERT,SCREW THD,SLFLKG,CHR CRES,0.210 IN LG,0.162 IN DIA 6-32 INTL THD,10-32 EXT THD T62P59 (03038)	EA	4								4	12	
MD H		SPACER 2147983-5 (49671)	EA	2								4	13	
H H		GASKET,RAU FREQ INTRF,SILICONE, 0.125 THK,25 DURMETER 2147925-1 (49671)	EA	1								4	14	
H H		PLATE,IDENT,AL ALY SH,0.030 THK, CONDTM H32,PER QQ-A-250/8D 2147982-1 (49671)	EA	1								4	15	
P H	5310-938-2013	NUT,PL,HEX,CRES,PSVT,2-56UNC-28, 1/16 IN THK MS35649-224 (96906)	EA	4		*	*	*	*	*	*	4	16	
P H	5305-054-5648	SCREW,MACH,PAN HD,CROSS REC, CRES,PSVT,4-40UNC-2A,5/16 IN LG MS1957-14 (96906)	EA	4		*	*	*	*	*	*	4	17	
P H	5310-595-6211	WASHER,FL,MET,RND,CRES,0.125 IN ID,0.250 IN OD,0.022 IN THK MS15795-803 (96906)	EA	4		*	*	*	*	*	*	4	18	
P H	5310-933-8118	WASHER,LOCK SPR HLCL,CRES,PSVT, 0.115 IN ID,0.209 IN OD,0.025 IN THK MS33338-135 (96906)	EA	4		*	*	*	*	*	*	4	19	

SECTION II REPAIR PARTS FOR DIRECT SUPPORT, GENERAL SUPPORT, AND DEPOT MAINTENANCE (CONTINUED)

(1) SMB CODE	(2) FEDERAL STOCK NUMBER	(3) DESCRIPTION (4) (5) (6) (7) (8) (9) (10) REFERENCE NUMBER & MFR CODE (USABLE ON CODE) UNIT OF MEAS QTY INC IN UNIT 30-DAY DS MAINT ALLOWANCE 30-DAY GS MAINT ALLOWANCE 1 YR ALW PER EQUIP CNTGCV DEPOT MAINT ALW PER 100 EQUIP ILLUSTRATIONS	(4) UNIT OF MEAS	(5) QTY INC IN UNIT	(6) 30-DAY DS MAINT ALLOWANCE			(7) 30-DAY GS MAINT ALLOWANCE			(8) 1 YR ALW PER EQUIP CNTGCV	(9) DEPOT MAINT ALW PER 100 EQUIP	(10) ILLUSTRATIONS	
					(a)	(b)	(c)	(a)	(b)	(c)			(a)	(b)
					1-20	21-50	51-100	1-20	21-50	51-100			FIG NO	ITEM NO OR REFERENCE DESIGNATION
P H	5330-853-3975	WASHER, SEC, CRES, PSVT, SYNTH RBR, 0.100 IN ID, 0.312 IN OD, 0.038 IN THK NAS1398C06Y (80205)	EA	4				*	*	*	*	*	4	20
P H	5305-257-3162	SCREW, MACH, BTNHD, UNDERCUT, CROSS REC, SLFSE, SST, PSVT, 8-32UNC-3A, 0.750 IN LG, TPL WSHR, SLFSE BUNA N O-RING AB2632R12 (02310)	EA	20				*	*	*	*	*	4	21
X		CHASSIS, ELECTRICAL EQPT 2147990-501 (49671)	EA	1									4	22
M H		BRACKET, ANGLE, AL ALY SH, 0.062 THK, CONDTN H32, PER QQ-A-250/8D 2147915-501 (49671)	EA	1									5	1
P H	5305-054-6651	SCREW, MACH, PAN HD, CROSS REC, CRES, PSVT, 6-32UNC-2A, 5/16 IN LG MS51957-27 (96906)	EA	8				*	*	*	*	*	5	2
P H	5310-722-5998	WASHER, FL, MET, RND, CRES, 0.156 IN ID, 0.312 IN OD, 0.035 IN THK MS15795-805 (96906)	EA	22				*	*	*	*	*	5	3
P H	5310-929-6395	WASHER, LOCK SPA HLCL, CRES, PSVT, 0.141 IN ID, 0.250 IN OD, 0.031 IN THK MS35338-136 (96906)	EA	18				*	*	*	*	*	5	4
M H		ANGLE, AL ALY SH, 0.062 THK, CONDTN H32, PER QQ-A-250/8D 2147915-1 (49671)	EA	1									5	5
P H	5340-860-1766	NUT, PLAIN, CLINCH, CRES, PSVT, 6-32NC-2B, 0.094 IN THK NCH6-2-2-1 (07886)	EA	8				*	*	*	*	*	5	6
M H		BRACKET, ANGLE, AL ALY SH, 0.063 THK, CONDTN H32, PER QQ-A-250/8D 2147988-501 (49671)	EA	1									5	7
P H	5325-246-6588	FASTENER, PNL, CAPTIVE SCR, 6-32 THD, 0.031-0.62 IN TOP PNL GRIP THK, 0.313-0.437 IN GRIP 07500-6A3 (08524)	EA	3				*	*	*	*	*	5	8
M H		ANGLE, AL ALY SH, 0.063 THK, CONDTN H32, PER QQ-A-250/8D 2147988-1 (49671)	EA	1									5	9
P H	5970-917-3855	INSULATOR, BSHG, NYL, NAT SHLDR, 0.087 IN LG, 0.290 IN DIA DA, 0.140 IN ID, RLV AREA 0.040 IN LG BY 0.170 IN OD HY06-040 (08289)	EA	8				*	*	*	*	*	5	10
P H		NUT, BLD RVT, CSKH, INTL THD, NON-LKG, CRES, 0.3750-24UNF-3B, KEYLESS CL END, 0.106 IN GRIP RNG NAS1330C6B106 (80205)	EA	8				*	*	*	*	*	5	11
P H	9320-351-8193	RUBBER, SILICONE, 0.125 IN THK AMS3196 (81343)	IN	2				*	*	*	*	*	5	12
M H		BRACKET, ANGLE, AL ALY SH, 0.062 THK, CONDTN H32, PER QQ-A-250/8D 2147996-1 (49671)	EA	1									5	13
P H	5310-934-9761	NUT, PL, HEX, CRES, PSVT, 6-32UNC-2B, 7/64 IN THK MS35649-264 (96906)	EA	10				*	*	*	*	*	5	14
P H	5305-958-2918	SCREW, MACH, FL, CSKH, 100 DEGREE, CROSS REC, CRES, PSVT, 6-32UNC-2A, 3/8 IN LG MS24693C26 (96906)	EA	6				*	*	*	*	*	5	15
M H		BRACKET, ANGLE, AL ALY SH, 0.063 THK, CONDTN H32, PER QQ-A-250/8D 2147997-1 (49671)	EA	1									5	16
M H		BRACKET, ANGLE, AL ALY SH, 0.062 THK, CONDTN H32, PER QQ-A-250/8D 2147998-1 (49671)	EA	1									5	17

SECTION II REPAIR PARTS FOR DIRECT SUPPORT, GENERAL SUPPORT, AND DEPOT MAINTENANCE (CONTINUED)

(1) SMR CODE	(2) FEDERAL STOCK NUMBER	(3) DESCRIPTION REFERENCE NUMBER & MFR CODE	(4) UNIT OF MEAS	(5) QTY INC IN UNIT	(6) 30-DAY DS MAINT ALLOWANCE			(7) 30-DAY GS MAINT ALLOWANCE			(8) 1 YR ALW PER EQUIP CMT/PCY	(9) DEPOT MAINT ALW PER 100 EQUIP	(10) ILLUSTRATIONS	
					(a) 1-20	(b) 21-50	(c) 51-100	(a) 1-20	(b) 21-50	(c) 51-100			(a) FIG NO.	(b) ITEM NO. OR REFERENCE DESIGNATION
					USABLE ON CODE									
H H		BRACKET, DBL ANGLE, AL ALY, 0.090 THK, CONDTN H32, PER QQ-A-250/8D 2120718-501 (49671)	EA	1								5	18	
P H	5305-066-7328	SCREW, HACH, FL, CSKH, 100 DEGREE, CROSS REC, CRES, PSVT, 6-32UNC-2A, 7/16 IN LG MS24693C27 (96906)	EA	9				*	*	*	*	5	19	
H H		BRACKET, AL ALY 5H, 0.090 THK, CONDTN H32, PER QQ-A-250/8D 2120718-1 (49671)	EA	1								5	20	
P H	5310-954-7893	NUT, CLINCH, PLTG, SL FLKG, STL, CD PL, 6-32UNC-38 MF7200-06 (75237)	EA	43				*	*	*	*	5	21	
P H	5310-966-9591	SPACER, SLV, 1/2 H BR, CD PL, 0.320 IN LG, 0.250 IN DIA OA, 6-32 INT THD 1246-18 (71279)	EA	4				*	*	*	*	5	22	
H H		BRACKET, ELEC CMPNT, AL ALY 5H, 0.090 THK, CONDTN H32, PER QQ-A-250/8D 2148132-501 (49671)	EA	1								5	23	
P H	5305-969-6495	SCREW, HACH, FL, CSKH, 100 DEGREE, CROSS REC, CRES, PSVT, 6-32UNC-2A, 5/16 IN LG MS24693C25 (96906)	EA	1				*	*	*	*	5	24	
X		BRACKET 2148132-1 (49671)	EA	1								5	25	
P H	9390-926-1394	GROMMET, PLTIC, EDGING, NAT CLR, 0.155 IN DIA, 0.220 IN W MS21236-3N (96906)	IN	1				*	*	*	*	5	26	
P H	5340-649-7235	NUT, PLAIN, CLINCH, CRES, PSVT, 4-40UNC-28, 0.085 IN THK NCM451-3 (07886)	EA	4				*	*	*	*	5	27	
H H		BRACKET, ELEC CONN, AL ALY 5H, 0.063 THK, CONDTN H32, PER QQ-A-250/8D 2147978-501 (49671)	EA	1								5	28	
P H	5305-054-6653	SCREW, HACH, PAN HD, CROSS REC, CRES, PSVT, 6-32UNC-2A, 7/16 IN LG MS31937-29 (96906)	EA	4				*	*	*	*	5	29	
X		BRACKET 2147978-1 (49671)	EA	1								5	30	
H H		BRACKET, XSTR SET, AL ALY 5H, 0.090 THK, CONDTN H32, PER QQ-A-250/8D 2147909-501 (49671)	EA	1								5	31	
X		BRACKET 2147909-1 (49671)	EA	1								5	32	
X		CHASSIS, WELDED 2147990-502 (49671)	EA	1								5	33	
P H	5340-427-9969	HINGE, BUTT 2147924-1 (49671)	EA	1				*	*	*	*	5	34	
GROUP 04 CIRCUIT CARD ASSEMBLIES														
P H R	6625-434-5623	CIRCUIT CARD ASSY, TACH/EGT/OVERRIDE GENERATOR CIRCUITS 2147966-501 (49671)	EA	1				*	*	*	*	6	1	
P H	5910-229-8333	CAPACITOR, FIXED 05TQ104GSN (12517)	EA	2				*	*	*	*	6	2	
P H	5910-857-9192	CAPACITOR, FIXED CERAMIC DIEL CK06BX103H (81349)	EA	2				*	*	*	*	6	3	
P H		CAPACITOR, FIXED ELECTROLYTIC CSR13886MH (81349)	EA	1				*	*	*	*	6	4	
P H		CAPACITOR, FIXED ELECTROLYTIC CSR138196MH (81349)	EA	2				*	*	*	*	6	5	

SECTION II REPAIR PARTS FOR DIRECT SUPPORT, GENERAL SUPPORT, AND DEPOT MAINTENANCE (CONTINUED)

(1) SMR CODE	(2) FEDERAL STOCK NUMBER	(3) DESCRIPTION USABLE ON CODE	(4) UNIT OF MEAS	(5) QTY INC IN UNIT	(6) 30-DAY QS MAINT ALLOWANCE			(7) 30-DAY QS MAINT ALLOWANCE			(8) 1 YR ALW PRG E JIP ONTGCV	(9) DEPOT MAINT ALW PER 100 EQUIP	(10) ILLUSTRATIONS	
					(a) 1-20	(b) 21-50	(c) 51-100	(a) 1-20	(b) 21-50	(c) 51-100			(a) FIG NO	(b) ITEM NO. OR REFERENCE DESIGNATION
P H	5910-018-1418	CAPACITOR, FIXED ELECTROLYTIC M39003-01-2304 (81349)	EA	1				*	*	*	*	*	6	6
P H		CAPACITOR, FIXED ELECTROLYTIC CSR130226MM (81349)	EA	1				*	*	*	*	*	6	7
P H		CAPACITOR, FIXED ELECTROLYTIC CSR136226MM (81349)	EA	1				*	*	*	*	*	6	8
P H	5910-934-3141	CAPACITOR, FIXED PPR OR PLSTC CH09A1RA473K (81349)	EA	1				*	*	*	*	*	6	9
P H		CONNECTOR, PLUG, ELECTRICAL 00-8218-036-000-002 (91662)	EA	1				*	*	*	*	*	6	10
P H	5962-236-8185	INTEGRATED CIRCUIT U6W7747393 (07263)	EA	5				*	*	*	*	*	6	11
P H		JACK, TIP 8041-1369-1 (91506)	EA	15				*	*	*	*	*	6	12
P H	5970-052-9583	MOUNTING PAD, ELEC CMPNT, DIAL PMT, BLK, 0.305 IN DIA, 0.125 IN THK D/A 10109DAP (07C47)	EA	9				*	*	*	*	*	6	13
X1		PRINTED WIRING BOARD 2147968-1 (49671)	EA	1									6	14
P H	5961-842-9564	SEMICONDUCTOR DEVICE, DIODE IN914 (81349)	EA	14				*	*	*	*	*	6	15
P H	5961-866-5454	SEMICONDUCTOR DEVICE, DIODE IN821 (81349)	EA	1				*	*	*	*	*	6	16
P H		SEMICONDUCTOR DEVICE, DIODE IN827 (81349)	EA	1				*	*	*	*	*	6	17
P H	5961-892-0734	SEMICONDUCTOR DEVICE, DIODE IN4038 (81349)	EA	1				*	*	*	*	*	6	18
P H	5961-226-8584	TRANSISTOR 2N2222 (81349)	EA	9				*	*	*	*	*	6	19
P H	5905-913-3073	RESISTOR, FIXED, FILM RLO7S103J (81349)	EA	11				*	*	*	*	*	7	1
P H	5905-116-8554	RESISTOR, FIXED, COMPOSITION RCR07G105JS (81349)	EA	3				*	*	*	*	*	7	2
P H	5905-728-6645	RESISTOR, FIXED, FILM RLO7S272J (81349)	EA	1				*	*	*	*	*	7	3
P H	5905-730-1489	RESISTOR, FIXED, FILM RLO7S472J (81349)	EA	6				*	*	*	*	*	7	4
P H	5905-727-5352	RESISTOR, FIXED, FILM RLO7S182J (81349)	EA	2				*	*	*	*	*	7	5
P H	5905-776-5313	RESISTOR, FIXED, FILM RL20S471J (81349)	EA	1				*	*	*	*	*	7	6
P H	5905-775-0633	RESISTOR, FIXED, FILM RL20S561J (81349)	EA	1				*	*	*	*	*	7	7
P H	5905-764-4985	RESISTOR, FIXED, FILM RLO7S104J (81349)	EA	2				*	*	*	*	*	7	8
P H	5905-727-5341	RESISTOR, FIXED, FILM RLO7S102J (81349)	EA	5				*	*	*	*	*	7	9
P H	5905-727-5343	RESISTOR, FIXED, FILM RLO7S122J (81349)	EA	1				*	*	*	*	*	7	10
P H	5905-760-5772	RESISTOR, FIXED, FILM RLO7S332J (81349)	EA	2				*	*	*	*	*	7	11
P H	5905-730-1500	RESISTOR, FIXED, FILM RLO7S183J (81349)	EA	1				*	*	*	*	*	7	12
P H	5905-730-1495	RESISTOR, FIXED, FILM RLO7S822J (81349)	EA	1				*	*	*	*	*	7	13
P H	5905-727-5355	RESISTOR, FIXED, FILM RLO7S222J (81349)	EA	3				*	*	*	*	*	7	14

SECTION II REPAIR PARTS FOR DIRECT SUPPORT, GENERAL SUPPORT, AND DEPOT MAINTENANCE (CONTINUED)

(1) FEDERAL STOCK NUMBER	(2) FEDERAL STOCK NUMBER	(3) DESCRIPTION REFERENCE NUMBER & MFR CODE	(4) USABLE ON CODE	(5) UNIT OF MEAS	(6) QTY INC IN UNIT	(8) 30-DAY DS MAINT ALLC VCE			(7) 30-DAY GS MAINT ALLOWANCE			(8) 1 YR ALW PER EQUIP ONTCGY	(9) DEPOT MAINT ALW PER 100 EQUIP	(10) ILLUSTRATIONS	
						(8) 1-20	(8) 21-50	(8) 51-100	(7) 1-20	(7) 21-50	(7) 51-100			(10) FIG NO	(10) ITEM NO OR REFERENCE DESIGNATION
P H	5905-768-3662	RESISTOR, FIXED, FILM RL07S223J (81349)	EA	2										7	15
P H	5905-727-5317	RESISTOR, FIXED, FILM RL07S101J (81349)	EA	3										7	16
P H	5905-855-4933	RESISTOR, FIXED, FILM RN65E3012F (81349)	EA	1										7	17
P H	5905-236-7961	RESISTOR, FIXED, FILM RN65E1332F (81349)	EA	1										7	18
P H	5905-851-6390	RESISTOR, FIXED, FILM RN65E1004F (81349)	EA	2										7	19
P H	5905-768-5922	RESISTOR, FIXED, FILM RL20S152J (81349)	EA	1										7	20
P H	5905-851-6389	RESISTOR, FIXED, FILM RN65E1002F (81349)	EA	1										7	21
P H	5905-764-4968	RESISTOR, FIXED, FILM RL07S121J (81349)	EA	2										7	22
P H	5905-730-1498	RESISTOR, FIXED, FILM RL07S123J (81349)	EA	2										7	23
P H	5905-727-5346	RESISTOR, FIXED, FILM RL07S152J (81349)	EA	3										7	24
P H	5905-903-5147	RESISTOR, FIXED, FILM RN65E9091F (81349)	EA	1										7	25
P H	5905-236-7958	RESISTOR, FIXED, FILM RN65E1020B (81349)	EA	1										7	26
P H	5905-767-3220	RESISTOR, FIXED, FILM RL20S222J (81349)	EA	1										7	27
P H	5905-689-6799	RESISTOR, VARIABLE, WH RT12C2P502 (81349)	EA	2										7	28
P H	5905-728-7804	RESISTOR, VARIABLE, WH RT12C2P201 (81349)	EA	1										7	29
P H	5905-761-5409	RESISTOR, VARIABLE, WH RT12C2P202 (81349)	EA	1										7	30
P H	5905-717-5884	RESISTOR, VARIABLE, WH RT12C2P102 (81349)	EA	1										7	31
P H	6145-577-3420	WIRE, 24AWG, SOLID, WHT 524 (81349)	FT	1										7	32
P H	6625-434-5639	CIRCUIT CARD ASSY, 400HZ, 20VDC SUPPLY, HOOK DELAY GENERATOR AND LAMP DRIVER 2147969-501 (49671)	EA	1										8	1
P H	5910-194-9261	CAPACITOR, FIXED CERAMIC DIEL CK050X122K (81349)	EA	1										8	2
P H	5910-078-7227	CAPACITOR, FIXED ELECTROLYTIC CSR13E225KM (81349)	EA	1										8	3
P H	5910-067-4413	CAPACITOR, FIXED ELECTROLYTIC CSR13G475KM (81349)	EA	1										8	4
P H	5910-998-6949	CAPACITOR, FIXED ELECTROLYTIC CSR13P226KM (81349)	EA	2										8	5
P H	5910-105-1977	CAPACITOR, FIXED ELECTROLYTIC CSR13G335KM (81349)	EA	1										8	6
P H	5910-851-0464	CAPACITOR, FIXED ELECTROLYTIC CSR13G474KM (81349)	EA	1										8	7
P H	5910-935-3511	CAPACITOR, FIXED ELECTROLYTIC CSR13E106KM (81349)	EA	4										8	8
P H	5910-954-9766	CAPACITOR, FIXED MICA DIELECTRIC CH06F0392GP3 (81349)	EA	3										8	9

SECTION II REPAIR PARTS FOR DIRECT SUPPORT, GENERAL SUPPORT, AND DEPOT MAINTENANCE (CONTINUED)

(1) SMR CODE	(2) FEDERAL STOCK NUMBER	(3) DESCRIPTION REFERENCE NUMBER & MFR CODE	(4) UNIT OF MEAS USABLE ON CODE	(5) QTY INC IN UNIT	(11) 30-DAY DS MAINT ALLOWANCE			(12) 30-DAY GS MAINT ALLOWANCE			(14) PER ALB PER EQUIP CENTOVCY	(15) DEPOT MAINT ALB PER 100 EQUIP	(16) FIG NO	(17) ITEM NO OF REFERENCE E.C. SIGNATURE
					(11) 1-20	(11) 21-50	(11) 51-100	(12) 1-20	(12) 21-50	(12) 51-100				
P H		CAPACITOR, FIXED POLYCARBON DIEI 03PL504JSN (12517)	EA	1								8	10	
P H		CONNECTOR, PLUG, ELECTRICAL 00-8218-036-000-002 (91662)	EA	1								8	11	
P H	5962-236-8185	INTEGRATED CIRCUIT U6W747393 (07263)	EA	4								8	12	
P H		JACK, TIP 8041-1509-1 (91506)	EA	13								8	13	
P H	5970-052-9583	MOUNTING PAD, ELEC CNPNT, DIAL PTH, BLK, 0.303 IN DIA, 0.125 IN THK Q/A 10109DAP (07047)	EA	13								8	14	
X1		PRINTED WIRING BOARD 2147971-1 (49671)	EA	1								8	15	
P H	5961-866-5454	SEMICONDUCTOR DEVICE, DIODE 1N821 (81349)	EA	1								8	16	
P H	5961-842-9864	SEMICONDUCTOR DEVICE, DIODE 1N914 (81349)	EA	6								8	17	
P H	5961-852-7549	SEMICONDUCTOR DEVICE, DIODE 1N754A (81349)	EA	2								8	18	
P H	5961-059-4464	TRANSISTOR 2N2218 (81349)	EA	3								8	19	
P H	5961-226-8584	TRANSISTOR 2N2222 (81349)	EA	10								8	20	
P H	5905-768-3662	RESISTOR, FIXED, FILM RL07S223J (81349)	EA	5								9	1	
P H	5905-727-5317	RESISTOR, FIXED, FILM RL07S101J (81349)	EA	1								9	2	
P H	5905-728-6645	RESISTOR, FIXED, FILM RL07S272J (81349)	EA	2								9	3	
P H	5905-727-5355	RESISTOR, FIXED, FILM RL07S222J (81349)	EA	3								9	4	
P H	5905-730-1489	RESISTOR, FIXED, FILM RL07S472J (81349)	EA	6								9	5	
P	5905-730-1490	RESISTOR, FIXED, FILM RL07S512J (81349)	EA	1								9	6	
P H	5905-709-2681	RESISTOR, FIXED, FILM RN69E1471F (81349)	EA	1								9	7	
P H	5905-727-5341	RESISTOR, FIXED, FILM RL07S102J (81349)	EA	2								9	8	
P H	5905-730-1514	RESISTOR, FIXED, FILM RL07S823J (81349)	EA	1								9	9	
P H	5905-851-5667	RESISTOR, FIXED, FILM RN69E5113F (81349)	EA	1								9	10	
P H	5905-913-8073	RESISTOR, FIXED, FILM RL07S105J (81349)	EA	5								9	11	
P H	5905-851-6389	RESISTOR, FIXED, FILM RN69E1002F (81349)	EA	1								9	12	
P H	5905-730-1512	RESISTOR, FIXED, FILM RL07S683J (81349)	EA	1								9	13	
P H	5905-988-5442	RESISTOR, FIXED, FILM RN69E3482F (81349)	EA	1								9	14	
P H	5905-774-8300	RESISTOR, FIXED, FILM RL07S473G (81349)	EA	1								9	15	
P H	5905-767-2418	RESISTOR, FIXED, FILM RL07S562J (81349)	EA	1								9	16	
P H	5905-764-4985	RESISTOR, FIXED, FILM RL07S104J (81349)	EA	3								9	17	

SECTION II REPAIR PARTS FOR DIRECT SUPPORT, GENERAL SUPPORT, AND DEPOT MAINTENANCE (CONTINUED)

(1) SMR CODE	(2) FEDERAL STOCK NUMBER	(3) DESCRIPTION REFERENCE NUMBER & MFR CODE	(4) UNIT OF MEAS	(5) QTY INC IN UNIT	(6) 30-DAY GS MAINT ALLOWANCE			(7) 30-DAY GS MAINT ALLOWANCE			(8) 1 YR ALW PER EQUIP CMT/CDY	(9) DEPOT MAINT ALW PER 100 EQUIP	(10) ILLUSTRATIONS	
					(a) 1-20	(b) 21-50	(c) 51-100	(d) 1-20	(e) 21-50	(f) 51-100			(11) FIG NO	(12) ITEM NO. OR REFERENCE DESIGNATION
P H	5905-901-4016	RESISTOR, FIXED, FILM RL20S102J (81349)	EA	2				*	*	*	*	9	18	
P H	5905-345-7850	RESISTOR, FIXED, FILM RLR07C390GM (81349)	EA	1				*	*	*	*	9	19	
P H	5905-236-7967	RESISTOR, FIXED, FILM RN05E052F (81349)	EA	1				*	*	*	*	9	20	
P H	5905-866-0245	RESISTOR, FIXED, FILM RN05E1003F (81349)	EA	2				*	*	*	*	9	21	
P M	5905-782-1503	RESISTOR, FIXED, FILM RL07S271G (81349)	EA	1				*	*	*	*	9	22	
P H	5905-904-4333	RESISTOR, FIXED, FILM RL07S123G (81349)	EA	1				*	*	*	*	9	23	
P H	5905-886-2551	RESISTOR, FIXED, FILM RL07S392G (81349)	EA	2				*	*	*	*	9	24	
P H	5905-773-0623	RESISTOR, FIXED, FILM RL07S002G (81349)	EA	1				*	*	*	*	9	25	
P H	5905-727-5328	RESISTOR, FIXED, FILM RL07S001J (81349)	EA	1				*	*	*	*	9	26	
P H	5905-764-4916	RESISTOR, FIXED, FILM RL07S121J (81349)	EA	1				*	*	*	*	9	27	
P H	5935-768-5931	RESISTOR, FIXED, FILM RL07S194J (81349)	EA	1				*	*	*	*	9	28	
P H	5905-941-7638	RESISTOR, FIXED, FILM RN05E0010F (81349)	EA	1				*	*	*	*	9	29	
P M	5905-902-1477	RESISTOR, FIXED, FILM RL07S333J (81349)	EA	1				*	*	*	*	9	30	
P H	5905-938-6154	RESISTOR, FIXED, FILM RN05E2001F (81349)	EA	1				*	*	*	*	9	31	
P H	5905-724-5707	RESISTOR, FIXED, FILM RN05E1191F (81349)	EA	1				*	*	*	*	9	32	
P H		RESISTOR, FIXED, FILM RN05E1021F (81349)	EA	1				*	*	*	*	9	33	
P H	5905-727-5326	RESISTOR, FIXED, FILM RL07S561J (81349)	EA	2				*	*	*	*	9	34	
P H		RESISTOR, FIXED, FILM RN05E4871F (81349)	EA	1				*	*	*	*	9	35	
P M	5905-774-8310	RESISTOR, FIXED, FILM RL07S101G (81349)	EA	2				*	*	*	*	9	36	
P H	5905-990-4152	RESISTOR, WIRE WOUND RW09V1R0 (81349)	EA	1				*	*	*	*	9	37	
P H	5905-984-0429	RESISTOR, WIRE WOUND RW09V271 (81349)	EA	1				*	*	*	*	9	38	
P H	5905-060-3731	RESISTOR, WIRE WOUND RW09V1R0 (81349)	EA	2				*	*	*	*	9	39	
P H	5905-717-5884	RESISTOR, VARIABLE, WV RT12C2P102 (81349)	EA	2				*	*	*	*	9	40	
P H	5905-689-6798	RESISTOR, VARIABLE, WV RT12C2P203 (81349)	EA	1				*	*	*	*	9	41	
P H	5905-689-9408	RESISTOR, VARIABLE, WV RT12C2P103 (81349)	EA	2				*	*	*	*	9	42	

SECTION II REPAIR PARTS FOR DIRECT SUPPORT, GENERAL SUPPORT, AND DEPOT MAINTENANCE (CONTINUED)

(1) S&R CODE	(2) FEDERAL STOCK NUMBER	(3) DESCRIPTION REFERENCE NUMBER & MFR CODE	(4) UNIT OF MEAS	(5) QTY INC IN UNIT	(6) 30 DAYS MAINT ALLOWANCE			(7) 30 DAYS MAINT ALLOWANCE			(8) YR ALM PER EQUIP ONTCY	(9) DEPOT MAINT ALM PER 100 EQUIP	(10) ILLUSTRATIONS	
					(11) 1-20	(12) 21-50	(13) 51-100	(14) 1-20	(15) 21-50	(16) 51-100			(17) FIG NO	(18) ITEM NO OR REFERENCE DESIGNATION
GROUP 05 ELECTRICAL COMPONENTS														
P F	5925-902-2355	CIRCUIT BREAKER MS22073-3 (96906)	EA	1	•	•	•	•	•	•	•	•	10	1
P F	5975-682-0306	BOOT,DUST,MSTRE SEAL,GRAY SILICONE RBR BOOT,8RS NUT,NP, 15/32=32NS=2B NC3070 (97539)	EA	1	•	•	•	•	•	•	•	•	10	2
P H	5310-924-5968	WASHER,KEY,CO PLD,0.475 IN OD, 0.040 IN THK MS25081-4 (96906)	EA	1	•	•	•	•	•	•	•	•	10	3
P H	5935-882-3769	CONNECTOR,RECEPTACLE,ELEC MS3114E16=32S (96906)	EA	1				•	•	•	•	•	10	4
P H	5310-145-1658	NUT,SLTD,HEX,CONN MTG,AL ALY, 1.2500=18UNEF-28,0.125 IN THK, 1.430 IN ACR FL,0.135 IN SLOT MS3186=18 (96906)	EA	1				•	•	•	•	•	10	5
P H	5935-878-3248	CONNECTOR,RECEPTACLE,ELEC MS3114E16=26S (96906)	EA	1				•	•	•	•	•	10	6
P H	5310-358-0687	NUT,SLTD,HEX,CONN MTG,AL ALY, 1.1250=18UNEF-28,0.125 IN THK, 1.312 IN ACR FL,0.135 IN SLOT MS3186=16 (96906)	EA	1				•	•	•	•	•	10	7
P H	5935-821-0921	CONNECTOR,RECEPTACLE,ELEC MS3114E20=41S (96906)	EA	1				•	•	•	•	•	10	8
P H	5310-143-6515	NUT,SLTD,HEX,CONN MTG,AL ALY, 1.3750=18UNEF-28,0.125 IN THK, 1.962 IN ACR FL,0.135 IN SLOT MS3186=20 (96906)	EA	1				•	•	•	•	•	10	9
P H	5935-994-5164	CONNECTOR,RECEPTACLE,ELEC MS3114E14=12S (96906)	EA	1				•	•	•	•	•	10	10
P H	5310-177-7599	NUT,SLTD,HEX,CONN MTG,AL ALY, 1.1700=18UNEF-28,0.125 IN THK, 1.168 IN ACR FL,0.135 IN SLOT MS3186=14 (96906)	EA	1				•	•	•	•	•	10	11
P H		FILTER,RADIO FREQUENCY INTRF 07294F55123-1 (07294)	EA	1				•	•	•	•	•	10	12
P F	6210-176-4928	HOUSING,LAMP LM89-1 (81349)	EA	4	•	•	•	•	•	•	•	•	10	13
P H		NUT,PL,HEX,ELEC THIN,15/32NC=2B, 0.093 IN THK MS25082-8 (96906)	EA	4	•	•	•	•	•	•	•	•	10	14
P H	5330-724-7902	PACKING,PREFMD,RBR,SILICONE, 0.431 IN ID,0.073 IN THK MS9068=013 (96906)	EA	4	•	•	•	•	•	•	•	•	10	15
P H	5310-905-5454	WASHER,LOCK,FL,INTL T,CS,CD PL, 0.480 IN ID,0.607 IN OD,0.016 IN THK MS35333-121 (96906)	EA	4	•	•	•	•	•	•	•	•	10	16
P O	6240-763-7744	LAMP,INCAND,SC,MDCT,FLG B,28V MS18207-387 (96906)	EA	4	•	•	•	•	•	•	•	•	10	17
P O		LENS,RED P24-107 (87034)	EA	2	•	•	•	•	•	•	•	•	10	18
P O		LENS,YELLOW P24-109 (87034)	EA	1	•	•	•	•	•	•	•	•	10	19
P O		LENS,GREEN P24-108 (87034)	EA	1	•	•	•	•	•	•	•	•	10	20
P M	5940-356-2493	POST,BINDING,RED DF30RC (58474)	EA	1				•	•	•	•	•	10	21
P M	5940-269-2219	POST,BINDING,BLACK DF30RC (58474)	EA	1				•	•	•	•	•	10	22
P M	5940-752-0188	POST,BINDING GREEN DF30GHC (58474)	EA	1				•	•	•	•	•	10	23
P H	5930-233-7173	SWITCH,ROTARY 1J54A3-16G07F (27191)	EA	1				•	•	•	•	•	10	24

SECTION II REPAIR PARTS FOR DIRECT SUPPORT, GENERAL SUPPORT, AND DEPOT MAINTENANCE (CONTINUED)

(1) SMR CODE	(2) FEDERAL STOCK NUMBER	(3) DESCRIPTION REFERENCE NUMBER & MFR CODE	(4) UNIT OF MEAS	(5) QTY INC IN UNIT	(6) 30-DAY DS MAINT ALLOWANCE			(7) 30-DAY GS MAINT ALLOWANCE			(8) 1 YR ALW PER EQUIP CHNGCY	(9) DEPOT MAINT ALW PER 100 EQUIP	(10) ILLUSTRATIONS (a) FIG NO	(11) ITEM NO. OR REFERENCE DESIGNATION
					(a) 1-20	(b) 21-50	(c) 51-100	(a) 1-20	(b) 21-50	(c) 51-100				
P H	5975-987-8829	BOOT,DUST,MSTRE SEAL,CLR SILICONE RBR BOOT, LRS NUT,NP, 3/8-32NEF-28, FOR 1/4 IN DIA SHAFT N9033-1-4 (97539)	EA	4				*	*	*	*	10	25	
P H	5310-938-2013	NUT,PL,HEX,CRES,PSVT,2-56UNC-28, 1/16 IN THK MS35649-224 (96906)	EA	6				*	*	*	*	10	26	
P H	5310-595-6761	WASHER,FL,MET,RND,CRES,0.094 IN ID,0.250 IN OD,0.020 IN THK MS15795-802 (96906)	EA	12				*	*	*	*	10	27	
P H	5310-928-2690	WASHER,LOCK SPR HLCL,CRES,PSVT, 0.088 IN ID,0.172 IN OD,0.020 IN THK MS33338-134 (96906)	EA	6				*	*	*	*	10	28	
P D	5355-559-8943	KNOB,CONTROL,PLASTIC MS91528-2K2B (96906)	EA	4	*	*	*	*	*	*	*	10	29	
P H	5930-233-7171	SWITCH,ROTARY 1J52A11-8G07F (27191)	EA	2				*	*	*	*	10	30	
P H	5930-236-7948	SWITCH,ROTARY 1J52A11-2G07F (27191)	EA	1				*	*	*	*	10	31	
P F	5930-655-1923	SWITCH,TOGGLE,SP,SLD MS2509d-23 (96906)	EA	4	*	*	*	*	*	*	*	10	32	
P F	5935-539-7013	BOOT,DUST,MSTRE SEAL,SILICONE RBR,15/32-32UNS-28,0.55Q IN H MS423-02-01 (81349)	EA	10	*	*	*	*	*	*	*	10	33	
P F	5930-655-1508	SWITCH,TOGGLE,DP,SLD MS25100-23 (96906)	EA	4	*	*	*	*	*	*	*	10	34	
P F	5930-661-0995	SWITCH,TOGGLE,DP,SLD MS25100-30 (96906)	EA	2	*	*	*	*	*	*	*	10	35	
P H	5905-106-3666	RESISTOR,FIXED,COMPOSITION RCR07G103JS (81349)	EA	1				*	*	*	*	10	36	
P H		DIAL ASSEMBLY,SYNCHRO PSN 4535-8-090INE2 3-45IL (08730)	EA	1				*	*	*	*	11	1	
P H	5930-823-0482	BOOT,DUST,MSTRE SEAL,SILICONE RBR,3/8-32UNE-28,0.219 IN H MS423-09-02 (81349)	EA	2				*	*	*	*	11	2	
P H	5330-599-2934	PACKING,PREFMD,HYDR,0.487 IN ID, 0.103 IN THK MS28775-112 (96906)	EA	2				*	*	*	*	11	3	
P H	5350-140-4871	SCREW,MACH,PAN HD,CROSS REC, SLFSE,SLFLKG,SST,MHAG,PSVT, 6-32NC-2A,1/4 IN LG,SLFSE SILICONE O-RING,SLFLKG NYLON STRIP NT352R0632VC4L (02310)	EA	6				*	*	*	*	11	4	
P H	5310-183-4355	WASHER,FL,MET,LT,RND,CRES,0.390 IN ID,0.625 IN OD,0.032 IN THK AN960C616L (88044)	EA	2				*	*	*	*	11	5	
P H		WASHER,FL,NYL,RND,0.515 IN ID, 0.875 IN OD,0.063 IN THK NAS1515H- (80205)	EA	2				*	*	*	*	11	6	
P H	5990-138-8582	TRANSMITTER,SYNCHRO 2188431-1 (49671)	EA	1				*	*	*	*	11	7	
P H	6625-482-6149	MAGNASYN 2147993-501 (49671)	EA	1				*	*	*	*	11	8	
P H	5305-429-1715	SCREW,MACH,FLM,CSK,100 DEGREE, CROSS REC,SLFSE,SLFLKG,SST, 10-32NF-2A,0.3125 IN LG,SLFSE BUNA N O-RING,SLFSE NYL STRIP NT321R1032AC5L (02310)	EA	3				*	*	*	*	11	9	
X		PANEL 2147975-501 (49671)	EA	1								11	10	
P H	5305-958-2918	SCREW,MACH,FL,CSKH,100 DEGREE, CROSS REC,CRES,PSVT,6-32UNC-2A, 3/8 IN LG MS24693C26 (96906)	EA	20				*	*	*	*	11	11	

SECTION II REPAIR PARTS FOR DIRECT SUPPORT, GENERAL SUPPORT, AND DEPOT MAINTENANCE (CONTINUED)

(1) SMR CODE	(2) FEDERAL STOCK NUMBER	(3) DESCRIPTION REFERENCE NUMBER & MFR CODE	(4) USABLE ON CODE	(5) QTY OF REPAIR UNIT	(6) 30 DAY DS MAINT ALLOWANCE			(7) 30 DAY GS MAINT ALLOWANCE			(8) YR ALW PEL EQUIP CATGY	(9) DEPOT MAINT ALW PER 100 EQUIP	(10) ILLUSTRATIONS	
					(a)	(b)	(c)	(d)	(e)	(f)			(11) FIG NO	(12) ITEM NO OR REFERENCE DESIGNATION
					1-20	21-50	51-100	1-20	21-50	51-100				
M H		HANDLE,BDW,BRS,5/16 IN DIA 1041781032-6 (06540)	EA	2								11	12	
P H		FERRULE X1988-2 (71279)	EA	4		*	*	*	*	*		11	13	
P H	5305-931-3147	SCREW,MACH,TRM,CROSS REC,SLFLKG, CRES,PSVT,10-32NF-2A,1/2 IN LG, SLFLKG NYL STRIP LP57G02PB (03038)	EA	4		*	*	*	*	*		11	14	
P H	5310-236-6686	NUT,BLD RVT,CSKH,INTL THD,NDN LKG,CRES,0.1120-40UNC-3B,KEYED CL END,0.131 IN GRIP RNG NAS1330C04K8131 (80205)	EA	6		*	*	*	*	*		11	15	
P H		PIN,SPR,COILED,NMAG CRES,PSVT, 0.052 IN NOM DIA,MDM DUTY,0.125 IN LG NAS1407N4M2 (80205)	EA	3		*	*	*	*	*		11	16	
M H		PLATE,IDENT,AL ALY SH,0.032 THK, PER QQ-A-250/8 2147925-5 (49671)	EA	1								11	17	
P H	5305-054-5650	SCREW,MACH,PAN HD,CROSS REC, PSVT,4-40UNC-2A,7/16 IN LG MS91957-16 (96906)	EA	2		*	*	*	*	*		11	18	
P H	5310-057-0573	WASHER,FL,RDC OD,CRES,PSVT,0.115 IN ID,0.209 IN OD,0.032 IN THK NAS620C4 (80205)	EA	6		*	*	*	*	*		11	19	
P H	5310-933-8118	WASHER,LOCK SPR HLCL,CRES,PSVT, 0.115 IN ID,0.209 IN OD,0.025 IN THK MS35338-135 (96906)	EA	2		*	*	*	*	*		11	20	
P H		POINTER,DIAL,PLASTIC ROD,1.25 DIA,GRADE A,PER L-P-391B 2120724-1 (49671)	EA	2								11	21	
M H		SPACER,AL ALY SH,0.197 THK, COND TN T6,PER QQ-A-250/11D 2120724-2 (49671)	EA	2								11	22	
P H	5305-054-5653	SCREW,MACH,PAN HD,CROSS REC, CRES,PSVT,4-40UNC-2A,3/4 IN LG MS91957-19 (96906)	EA	4		*	*	*	*	*		11	23	
X		WELD ASSEMBLY,PANEL 2147975-502 (49671)	EA	1								11	24	
P H		RESISTOR,VARIABLE,PRCSN 35005926-102 (80249)	EA	1		*	*	*	*	*		11	25	
P H	5330-584-0265	PACKING,PREFMD,HYDR,0.364 IN ID, 0.070 IN THK MS28775-012 (96906)	EA	3		*	*	*	*	*		11	26	
P H	5355-682-7933	DIAL,CONTROL RBD (73138)	EA	3		*	*	*	*	*		11	27	
P H		RESISTOR,VARIABLE,PRCSN 35005926-502 (80249)	EA	2		*	*	*	*	*		11	28	
P H		RESISTOR,VARIABLE,PRCSN 343551-102 (80249)	EA	2		*	*	*	*	*		11	29	
P H	5930-823-0573	BOOT,DUST,MSTRE SEAL,SILICONE RBR,3/8-32UNEF-2B,0.219 IN H MS423-09-1 (81349)	EA	2		*	*	*	*	*		11	30	
P H	5355-685-4863	KNOB,CONTROL,PLASTIC MS91528-2K1B (96906)	EA	2		*	*	*	*	*		11	31	
P H		SWITCH,ROTARY 1J54A5-16GF (27191)	EA	1		*	*	*	*	*		11	32	
P H	5975-987-8829	BOOT,DUST,MSTRE SEAL,CLR SILICONE RBR BOOT,BRS NUT,NP, 3/8-32NEF-2B,FDR 1/4 IN DIA SHAFT N9033-1-4 (97539)	EA	1		*	*	*	*	*		11	33	
P H	5310-938-2013	NUT,PL,HEX,CRES,PSVT,2-56UNC-2B, 1/16 IN THK MS39649-224 (96906)	EA	2		*	*	*	*	*		11	34	

SECTION II REPAIR PARTS FOR DIRECT SUPPORT, GENERAL SUPPORT, AND DEPOT MAINTENANCE (CONTINUED)

(1) SMR CODE	(2) FEDERAL STOCK NUMBER	(3) DESCRIPTION REFERENCE NUMBER & MFR CODE	(4) UNIT OF MEAS	(5) QTY INC IN UNIT	(6) 30-DAY DS MAINT ALLOWANCE			(7) 30-DAY GS MAINT ALLOWANCE			(8) 1 YR ALW PER EQUIP CNTGCTY	(9) DEPOT MAINT ALW PER 100 EQUIP	(10) ILLUSTRATIONS	
					(a) 1-20	(b) 21-50	(c) 51-100	(a) 1-20	(b) 21-50	(c) 51-100			(a) FIG NO	(b) ITEM NO. OR REFERENCE DESIGNATION
P H	5310-595-6761	WASHER, FL, MET, RND, CRES, 0.094 IN ID, 0.250 IN OD, 0.020 IN THK MS19795-802 (96906)	EA	4				*	*	*	*	*	11	35
P H	5310-928-2690	WASHER, LOCK SPR HLCL, CRES, PSVT, 0.088 IN ID, 0.172 IN OD, 0.020 IN THK MS35338-134 (96906)	EA	2				*	*	*	*	*	11	36
P Q	5355-559-8943	KNOB, CONTROL PLASTIC MS91528-2K2B (96906)	EA	1	*	*	*	*	*	*	*	*	11	37
P H	5905-106-3666	RESISTOR, FIXED, COMPOSITION RCRO7G103J5 (81349)	EA	1				*	*	*	*	*	11	38
P H	5961-892-0734	SEMICONDUCTOR DEVICE, DIODE IN403B (81349)	EA	3				*	*	*	*	*	11	39
P H	5310-619-2166	NUT, HEX, MOUNTING, BRS, 1/2 HARD, 3/8-32NEF-28, 0.281 IN THK, 0.437 IN ACR FL 23-213-1 (73138)	EA	3				*	*	*	*	*	11	40
P H	5905-607-6150	WASHER, LOCATING, SPECIAL 23-206 (73138)	EA	3				*	*	*	*	*	11	41
H H		CLAMP, TRANSFORMER, CRES SH, 0.06 THK, PSVT E300, CLASS304 PER QQ-S-766C5 2148131-1 (49671)	EA	1									12	1
P H	5310-934-9761	NUT, PL, HEX, CRES, PSVT, 6-32UNC-28, 7/64 IN THK MS35649-264 (96906)	EA	12				*	*	*	*	*	12	2
P H	5305-054-6653	SCREW, MACH, PAN HD, CROSS REC, CRES, PSVT, 6-32UNC-2A, 7/16 I" LG MS51957-29 (96906)	EA	2				*	*	*	*	*	12	3
P H	5310-722-5998	WASHER, FL, MET, RND, CRES, 0.156 IN ID, 0.312 IN OD, 0.035 IN THK MS19795-805 (96906)	EA	26				*	*	*	*	*	12	4
P H	5310-929-6395	WASHER, LOCK SPR HLCL, CRES, PSVT, 0.141 IN ID, 0.250 IN OD, 0.031 IN THK MS35338-136 (96906)	EA	11				*	*	*	*	*	12	5
H H		RUBBER, SILICONE SH, 0.75 X 3.00 LG, 0.06 IN THK 2010841-368 (49671)	SH	2									12	6
P H	5305-054-6655	SCREW, MACH, PAN HD, CROSS REC, PSVT, 6-32UNC-2A, 5/8 IN LG MS51957-31 (96906)	EA	2				*	*	*	*	*	12	7
P H R	6625-434-5623	CIRCUIT CARD ASSY, TACH/EGT/DEOVERRIDE GENERATOR CIRCUITS 2147966-501 (49671)	EA	1				*	*	*	*	*	12	8
P H	5330-579-3158	PACKING, PREFMD, HYDR, 0.176 IN ID, 0.070 IN THK MS28775-008 (96906)	EA	8				*	*	*	*	*	12	9
P H		SCREW, SLFLKG, PAN HD, CROSS REC, FULL THD, CRES, .1380-32UNJC-3A, 0.063 IN THK NAS1742C06R10 (80205)	EA	8				*	*	*	*	*	12	10
P H R	6625-434-5639	CIRCUIT CARD ASSY, 400HZ, 20VDC SUPPLY, HOOK DELAY GENERATOR AND LAMP DRIVER 2147969-501 (49671)	EA	1				*	*	*	*	*	12	11
P H	5935-256-8606	CONNECTOR, RECEPTACLE, ELEC 00-8218-036-722-001 (91662)	EA	2				*	*	*	*	*	12	12
P H		SCREW, MACH, SLOT HD, THD FORMING, STL, CD PL, 2-32 THD, 1/4 IN LG 9023000040 (91662)	EA	4				*	*	*	*	*	12	13
P H R	5940-480-1288	ELECTRONIC COMPONENTS ASSY 2147989-501 (49671)	EA	1				*	*	*	*	*	12	14
P H	5305-054-6650	SCREW, MACH, PAN HD, CROSS REC, CRES, PSVT, 6-32UNC-2A, 1/4 IN LG MS51957-26 (96906)	EA	4				*	*	*	*	*	12	15

SECTION II REPAIR PARTS FOR DIRECT SUPPORT, GENERAL SUPPORT, AND DEPOT MAINTENANCE (CONTINUED)

(1) SMR CODE	(2) FEDERAL STOCK NUMBER	(3) DESCRIPTION REFERENCE NUMBER & MFR CODE	(4) UNIT OF MEAS	(5) QTY INC IN UNIT	(6) 30-DAY DS MAINT ALLOWANCE			(7) 30-DAY GS MAINT ALLOWANCE			(8) 1 YR ALW PER EQUIP CATEG	(9) DEPOT MAINT ALW PER 100 EQUIP	(10) ILLUSTRATIONS	
					(B) 1-20	(D) 21-50	(C) 51-100	(A) 1-20	(E) 21-50	(F) 51-100			(1) FIG NO	(2) ITEM NO OR REFERENCE DESIGNATION
					P H	5945-829-2994	RELAY M5757-10-023 (81349)	EA	2					
P H	5310-928-2690	SCREW,MACH,PAN HD,CROSS REC, CRES,PSVT,4-40UNC-2A,1/4 IN LG MS51957-13 (96906)	EA	4				*	*	*	*	*	12	17
P H	5310-057-0573	WASHER,FL,RDC OD,CRES,PSVT,0. 7 IN ID,0.209 IN OD,0.032 IN THK NAS620C4 (80205)	EA	4				*	*	*	*	*	12	18
P H	5310-933-8118	WASHER,LOCK SPR HLCL,CRES,PSVT, 0.115 IN ID,0.209 IN OD,0.025 IN THK MS35338-135 (96906)	EA	3				*	*	*	*	*	12	19
P H	5961-892-0734	SEMICONDUCTOR DEVICE,DIODE 1N483B (81349)	EA	2				*	*	*	*	*	12	20
P H		RESISTOR,FIXED,FILM RN65E1021F (81349)	EA	1				*	*	*	*	*	12	21
P H	5961-935-0138	SEMICONDUCTOR DEVICE,DIODE 1N1202A (81349)	EA	1				*	*	*	*	*	12	22
P H	5970-253-9871	INSULATOR,BSMG,NYL,NAT SHLDR, 0.093 IN LG,0.399 IN DIA OA, 0.260 IN ID,RLV AREA 0.200 IN LG,0.260 IN OD NY10-030 (08289)	EA	1				*	*	*	*	*	12	23
P H	5970-133-4840	INSULATOR,DISK,THERM-FILM,AMB, 0.562 IN OD,0.203 IN ID,0.002 IN THK 43-02-10 (13103)	EA	1				*	*	*	*	*	12	24
P H	5310-934-9765	NUT,PL,HEX,CRES,PSVT, 10-32UNF-2B,3/8 IN THK MS35650-304 (96906)	EA	1				*	*	*	*	*	12	25
P H	5310-595-6772	WASHER,FL,MET,RND,CRES,0.219 IN ID,0.488 IN OD,0.049 IN THK MS15795-808 (96906)	EA	1				*	*	*	*	*	12	26
P H	5310-209-1239	WASHER,LOCK,FL,EXT T,CRES,PSVT, 0.204 IN ID,0.410 IN OD,0.025 IN THK MS35335-60 (96906)	EA	1				*	*	*	*	*	12	27
P H	5940-964-8758	TERMINAL,LUG 626-10 (79963)	EA	1				*	*	*	*	*	12	28
P H	5940-948-1237	TERMINAL,STUD 5008 (11452)	EA	1				*	*	*	*	*	12	29
P H	5310-934-9759	NUT,PL,HEX,CRES,PSVT,8-32UNC-2B, 11/32 IN THK MS35649-84 (96906)	EA	1				*	*	*	*	*	12	30
P H	5305-054-6675	SCREW,MACH,PAN HD,CROSS REC, PSVT,8-32UNC-2A,1-1/4 IN LG MS51957-50 (96906)	EA	1				*	*	*	*	*	12	31
P H	5340-293-9800	SPACER,SCREW AND BOLT,2024 AL ALY,UNFIN,0.949 IN ID,3/16 IN OD,3/8 IN LG FOR NO. 8 SCREW NAS43DD3-24 (60205)	EA	1				*	*	*	*	*	12	32
P H	5310-880-5978	WASHER,FL,MET,RND,CRES,0.188 IN ID,0.375 IN OD,0.049 IN THK MS15795-807 (96906)	EA	5				*	*	*	*	*	12	33
P H	5310-543-2739	WASHER,LOCK,FL,INTL T,C5,CD PL, 0.176 IN ID,0.340 IN OD,0.023 IN THK MS35333-72 (96906)	EA	2				*	*	*	*	*	12	34
P H	5310-054-1830	WASHER,LOCK SPR HLCL,CRES,PSVT, 0.890 IN ID,1.464 IN OD,0.219 IN THK MS35338-80 (96906)	EA	1				*	*	*	*	*	12	35
P H		TERMINAL,STUD 486043-13 (49671)	EA	2				*	*	*	*	*	12	36
P H	5305-054-6652	SCREW,MACH,PAN HD,CROSS REC, CRES,PSVT,6-32UNC-2A,3/8 IN LG MS51957-28 (96906)	EA	2				*	*	*	*	*	12	37
P H		TRANSFORMER 02578 (15634)	EA	1				*	*	*	*	*	12	38

SECTION II REPAIR PARTS FOR DIRECT SUPPORT, GENERAL SUPPORT, AND DEPOT MAINTENANCE (CONTINUED)

(1) SMR CODE	(2) FEDERAL STOCK NUMBER	(3) DESCRIPTION REFERENCE NUMBER & MFR CODE	(4) UNIT OF MEAS	(5) QTY INC IN UNIT	(6) 30-DAY GS MAINT ALLOWANCE			(7) 30-DAY GS MAINT ALLOWANCE			(8) 1 YR ALW PER EQUIP CNTGCTY	(9) DEPOT MAINT ALW PER 100 EQUIP	(10) ILLUSTRATIONS (11) ITEM NO. OR REFERENCE DESIGNATION
					(a) 1-20	(b) 21-50	(c) 51-100	(a) 1-20	(b) 21-50	(c) 51-100			
					USABLE ON CCODE								
P H	5305-054-6668	SCREW,MACH,PAN HD,CROSS,PSVT, 8-32UNC-2A,3/8 IN LG MS51957-43 (96906)	EA	4				*	*	*	*	12	39
P H	5310-933-8119	WASHER,LOCK SPR HLCL,CRES,PSVT, 0.168 IN ID,0.293 IN OD,0.040 IN THK MS35338-137 (96906)	EA	4				*	*	*	*	12	40
P H	5961-199-6008	TRANSISTOR 2N3055 (81349)	EA	3				*	*	*	*	12	41
P H	5970-917-3855	INSULATOR,BSHC,NYL,NAT SHLDR, 0.087 IN LG 0.290 IN DIA OA, 0.140 IN ID,RLY AREA 0.040 IN LG BY 0.170 IN OD NY06-040 (08289)	EA	6				*	*	*	*	12	42
P H	5970-410-5964	INSULATOR,DISK,THERM-FILM,AMB, 1.655 IN LG,1.062 IN W,0.002 IN THK 43-03-3 (13103)	EA	3				*	*	*	*	12	43
P H	5305-054-6654	SCREW,MACH,PAN HD,CROSS,PSVT, 6-32UNC-2A,1/2 IN LG MS51957-30 (96906)	EA	7				*	*	*	*	12	44
P H	5310-209-1366	WASHER,LOCK,FL,EXT T,CRES,PSVT, 0.150 IN ID,0.320 IN OD,0.022 IN THK MS35335-58 (96906)	EA	3				*	*	*	*	12	45
P H	5940-827-2653	TERMINAL,LUG MS77060-2 (96906)	EA	3				*	*	*	*	12	46
P H	5910-111-1693	CAPACITOR,FIXED ELECTROLYTIC CL210J151TPE (81349)	EA	1				*	*	*	*	12	47
P H	5940-682-2477	TERMINAL,LUG MS77060-1 (96906)	EA	1				*	*	*	*	12	48
P H	5340-685-5901	CLAMP,LOOP,NYL,BLK,3/8 NOM ID, POR NO 6 SCREW 3-8-6 (95987)	EA	1				*	*	*	*	12	49
X1		BOARD 2147989-1 (49071)	EA	1								13	1
P H	5910-935-3511	CAPACITOR,FIXED ELECTROLYTIC CS<13E106KM (81349)	EA	3				*	*	*	*	13	2
P H	5905-256-0390	RESISTOR,FIXED,COMPOSITION RC42GF601J (81349)	EA	1				*	*	*	*	13	3
P H	5905-253-1233	RESISTOR,FIXED,COMPOSITION RC42GF561J (81349)	EA	1				*	*	*	*	13	4
P H	5905-141-0593	RESISTOR,FIXED,COMPOSITION RCR20G182JS (81349)	EA	2				*	*	*	*	13	5
P H	5905-059-7486	RESISTOR,FIXED,FILM RN60D4990F (81349)	EA	2				*	*	*	*	13	6
P H	5905-964-2378	RESISTOR,FIXED,FILM RN69D2740F (81349)	EA	2				*	*	*	*	13	7
P H	5905-727-5354	RESISTOR,FIXED,FILM RLO7S202J (81349)	EA	1				*	*	*	*	13	8
P H	5905-727-5343	RESISTOR,FIXED,FILM RLO7S122J (81349)	EA	1				*	*	*	*	13	9
P H	5905-760-5772	RESISTOR,FIXED,FILM RLO7S302J (81349)	EA	1				*	*	*	*	13	10
P H	5905-989-6500	RESISTOR,FIXED,FILM RN69D4421F (81349)	EA	1				*	*	*	*	13	11
P H	5961-892-0734	SEMICONDUCTOR DEVICE,DIODE 1N400B (81349)	EA	14				*	*	*	*	13	12
P H	5940-725-9498	TERMINAL,STUD SE12XC07 (81349)	EA	32				*	*	*	*	14	1
P H	6625-482-6149	MAGNASTY 2147998-501 (49071)	EA	1				*	*	*	*	15	1
P H	5950-463-4095	COIL,MAGNASTY 985009566 (97486)	EA	1				*	*	*	*	15	2
P H	5305-054-5638	SCREW,MACH,PAN HD,CROSS REC, CRES,PSVT,2-96UNC-2A,5/16 IN LG MS51957-4 (96906)	EA	3				*	*	*	*	15	3

SECTION II REPAIR PARTS FOR DIRECT SUPPORT, GENERAL SUPPORT, AND DEPOT MAINTENANCE (CONTINUED)

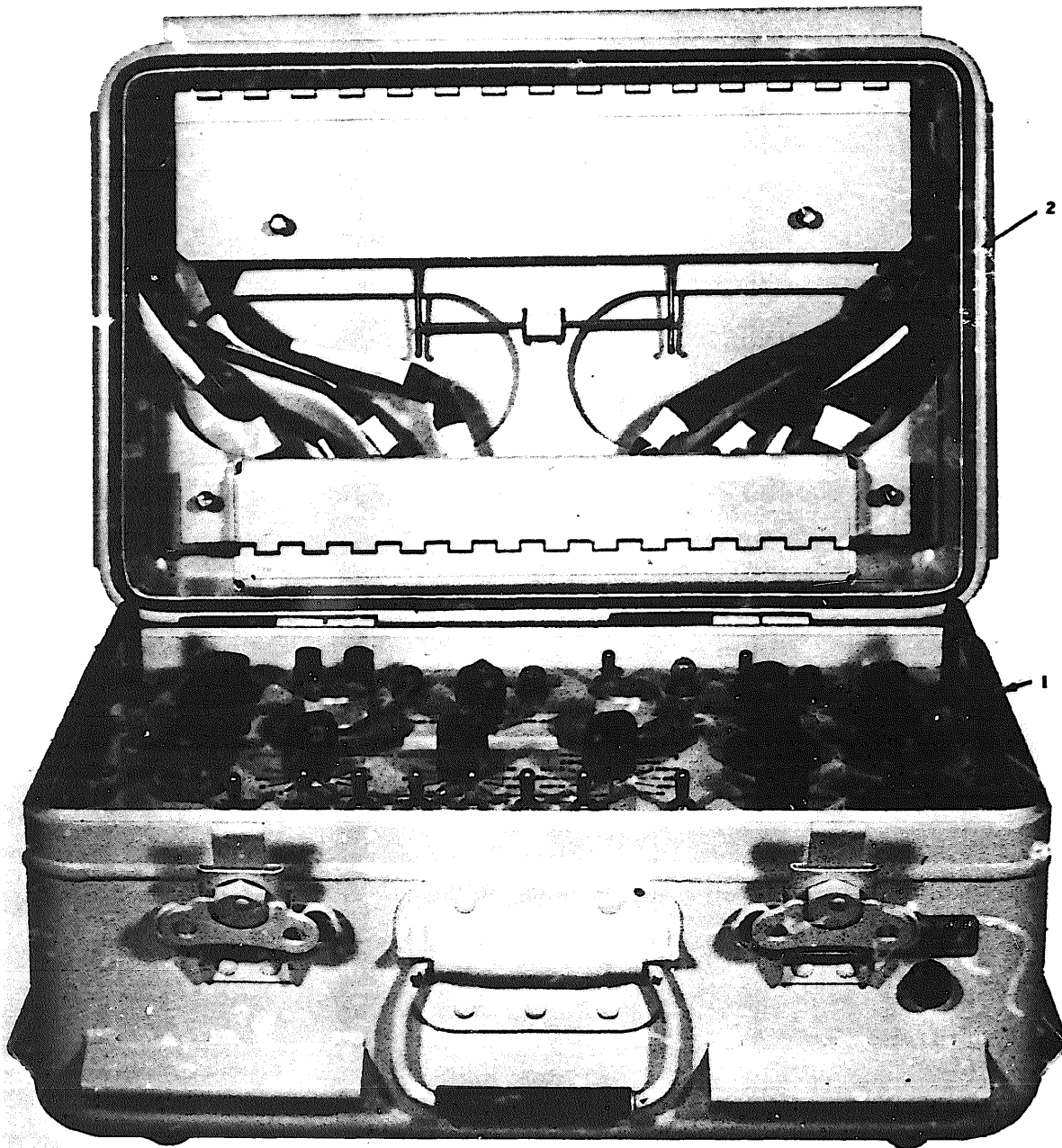
(1) SMR CODE	(2) FEDERAL STOCK NUMBER	(3) DESCRIPTION	(4) UNIT OF MEAS	(5) QTY INC IN UNIT	(6) 30-DAY DS MAINT ALLOWANCE			(7) 30-DAY GS MAINT ALLOWANCE			(8) 1 YR ALW PER EQUIP ONTGC	(9) DEPOT MAINT ALW PER 100 EQUIP	(10) ILLUSTRATIONS	
					(8) 1-20	(9) 21-50	(10) 51-100	(8) 1-20	(9) 21-50	(10) 51-100			(8) FIG NO	(9) ITEM NO. OR REFERENCE DESIGNATION
P H	5310-595-6761	WASHER, FL, MET, RND, CRES, 0.094 IN ID, 0.250 IN OD, 0.020 IN THK MS15795-802 (96906)	EA	3								15	4	
P H	5310-928-2690	WASHER, LOCK SPR HLCL, CRES, PSVT, 0.088 IN ID, 0.172 IN OD, 0.020 IN THK MS35338-134 (96906)	EA	3								15	5	
P H	5355-255-7489	DIAL, CONTRL 4035-1E2 3-4SIL (08730)	EA	1								15	6	
P H	6625-463-4005	HOUSING ASSEMBLY 2147973-501 (49671)	EA	1								15	7	
X1		HOUSING 2147973-1 (49671)	EA	1								15	8	
X1		SHAFT LOCK, ELEC CMPNT 2147977-1 (49671)	EA	1								15	9	
P H		NUT, PL, HEX, BRS, NP, 10-32UNF-28, 0.150 IN THK, 7/16 IN ACR FL 2149657-1 (49671)	EA	1								15	10	
P H	3110-255-7046	PLATE, RETAINING BEARING 2147974-501 (49671)	EA	1								15	11	
P H	5305-054-6652	SCREW, MACH, PAN HD, CROSS REC, CRES, PSVT, 6-32UNC-2A, 3/8 IN LG MS1957-28 (96906)	EA	3								15	12	
P H	5310-722-5998	WASHER, FL, MET, RND, CRES, 0.156 IN ID, 0.312 IN OD, 0.035 IN THK MS15795-805 (96906)	EA	3								15	13	
P H	5310-929-6395	WASHER, LOCK SPR HLCL, CRES, PSVT, 0.141 IN ID, 0.250 IN OD, 0.031 IN THK MS35338-136 (96906)	EA	3								15	14	
P H	3120-230-2147	BUSHING, SHLDR, 0.500 DIA BRZ ROD, COMP B, HARD, PER QQ-B-73001, 0.3762 IN SMK DIA, 0.240 IN ID, 0.190 IN OA M 2147977-2 (49671)	EA	1								15	15	
X1		PLATE 2147974-1 (49671)	EA	1								15	16	
P H	6625-463-4006	ROTOR ASSEMBLY, MAGNASYN 2147976-501 (49671)	EA	1								15	17	
X2	6620-019-8423	MAGNET AND HOLDER ASSEMBLY 985007061 (97424)	EA	1								15	18	
X1		SHAFT, SHOULDERED 2147976-1 (49671)	EA	1								15	19	
H H		SPACER, STEPPED, SST, PSVT, 1/4 IN HEX BAR 974255062-7 (06540)	EA	3								15	20	
P H	5310-773-7624	WASHER, FL, RDC JD, CRES, PSVT, 0.143 IN ID, 0.267 IN OD, 0.032 IN THK MS5620C6 (80205)	EA	3								15	21	
P H	5310-763-3925	WASHER, FL, CRES, 0.276 IN ID, 0.500 IN OD, 0.062 IN THK MS9321-10 (96906)	EA	3								15	22	
GROUP 06 BULK MATERIALS														
P H	6145-519-2602	WIRE, 24AWG, STRD BLK E24BLACK (81349)	FT	34										
P H	6145-715-1001	WIRE, 24AWG, STRD BRN E24BROWN (81349)	FT	4										
P H	6145-539-8061	WIRE, 24AWG, STRD RED E24RED (81349)	FT	13										

SECTION II REPAIR PARTS FOR DIRECT SUPPORT, GENERAL SUPPORT, AND DEPOT MAINTENANCE (CONTINUED)

(1) SMA CODE	(2) FEDERAL STOCK NUMBER	(3) DESCRIPTION REFERENCE NUMBER & MFR CODE	(4) UNIT OF MEAS USABLE ON CODE	(5) QTY INC IN UNIT	(6) 30-DAY DS MAINT ALLOWANCE			(7) 30-DAY GS MAINT ALLOWANCE			(8) 1 YR ALW PER EQUIP CATGORY	(9) DEPOT MAINT ALW PER 100 EQUIP	(10) ILLUSTRATIONS	
					(8) 1-20	(9) 21-50	(10) 51-100	(8) 1-20	(9) 21-50	(10) 51-100			(8) FIG NO	(9) ITEM NO. OR REFERENCE DESIGNATION
P M	6145-681-1222	WIRE, 24ANG, STRD ORN E24ORANGE (81349)	FT	4				*	*	*	*			
P M	6145-553-7699	WIRE, 24ANG, STRD YEL E24YELLOW (81349)	FT	4				*	*	*	*			
P M	6145-681-1221	WIRE, 24ANG, STRD GRN E24GREEN (81349)	FT	7				*	*	*	*			
P M	6145-583-3713	WIRE, 24ANG, STRD BLU E24BLUE (81349)	FT	6				*	*	*	*			
P M	6145-843-3961	WIRE, 24ANG, STRD VID E24VIOLET (81349)	FT	5				*	*	*	*			
P M	6145-842-9226	WIRE, 24ANG, STRD GRA E24GRAY (81349)	FT	3				*	*	*	*			
P M	6145-295-2804	WIRE, 24ANG, STRD WHT E24WHITE (81349)	FT	24				*	*	*	*			
P M	6145-062-0007	WIRE, 24ANG, STRD WHT-BLK E24WHITEBLACK (81349)	FT	3				*	*	*	*			
P M	6145-855-4306	WIRE, 24ANG, STRD WHT-BRN E24WHITEBROWN (81349)	FT	3				*	*	*	*			
P M	6145-062-0516	WIRE, 24ANG, STRD WHT-RED E24WHITERED (81349)	FT	5				*	*	*	*			
P M	6145-062-0517	WIRE, 24ANG, STRD WHT-ORN E24WHITEOANGE (81349)	FT	5				*	*	*	*			
P M	6145-843-2472	WIRE, 24ANG, STRD WHT-YEL E24WHITEYELLOW (81349)	FT	3				*	*	*	*			
P M	6145-825-2071	WIRE, 24ANG, STRD WHT-GRN E24WHITEGREEN (81349)	FT	3				*	*	*	*			
P M	6145-842-9233	WIRE, 24ANG, STRD WHT-BLU E24WHITEBLUE (81349)	FT	3				*	*	*	*			
P M	6145-855-4290	WIRE, 24ANG, STRD WHT-VID E24WHITEVIOLET (81349)	FT	3				*	*	*	*			
P M	6145-062-3302	WIRE, 24ANG, STRD WHT-GRA E24WHITEGRAY (81349)	FT	4				*	*	*	*			
P M	66145-155-5292	WIRE, 24ANG, STRD WHT-PLK-BRN 2184948-5E901 (49671)	FT	4				*	*	*	*			
P M	6145-155-5291	WIRE, 24ANG, STRD WHT-BLK-RED 2184948-5E902 (49671)	FT	8				*	*	*	*			
P M	6145-155-5290	WIRE, 24ANG, STRD WHT-BLK-ORN 2184948-5E903 (49671)	FT	3				*	*	*	*			
P M	6145-155-5289	WIRE, 24ANG, STRD WHT-BLK-YEL 2184948-5E904 (49671)	FT	3				*	*	*	*			
P M	6145-155-5288	WIRE, 24ANG, STRD WHT-BLK-GRN 2184948-5E905 (49671)	FT	6				*	*	*	*			
P M	6145-155-5287	WIRE, 24ANG, STRD WHT-BLK-BLU 2184948-5E906 (49671)	FT	8				*	*	*	*			
P M	6145-155-5286	WIRE, 24ANG, STRD WHT-BLK-VID 2184948-5E907 (49671)	FT	6				*	*	*	*			
P M		WIRE, 24ANG, STRD WHT-BLK-GRA 2184948-5E908 (49671)	FT	7				*	*	*	*			
P M	6145-155-5285	WIRE, 24ANG, STRD WHT-BRN-RED 2184948-5E912 (49671)	FT	2				*	*	*	*			
P M	6145-166-0761	WIRE, 24ANG, STRD WHT-BRN-ORN 2184948-5E913 (49671)	FT	3				*	*	*	*			
P M	6145-155-5204	WIRE, 24ANG, STRD WHT-BRN-YEL 2184948-5E914 (49671)	FT	4				*	*	*	*			

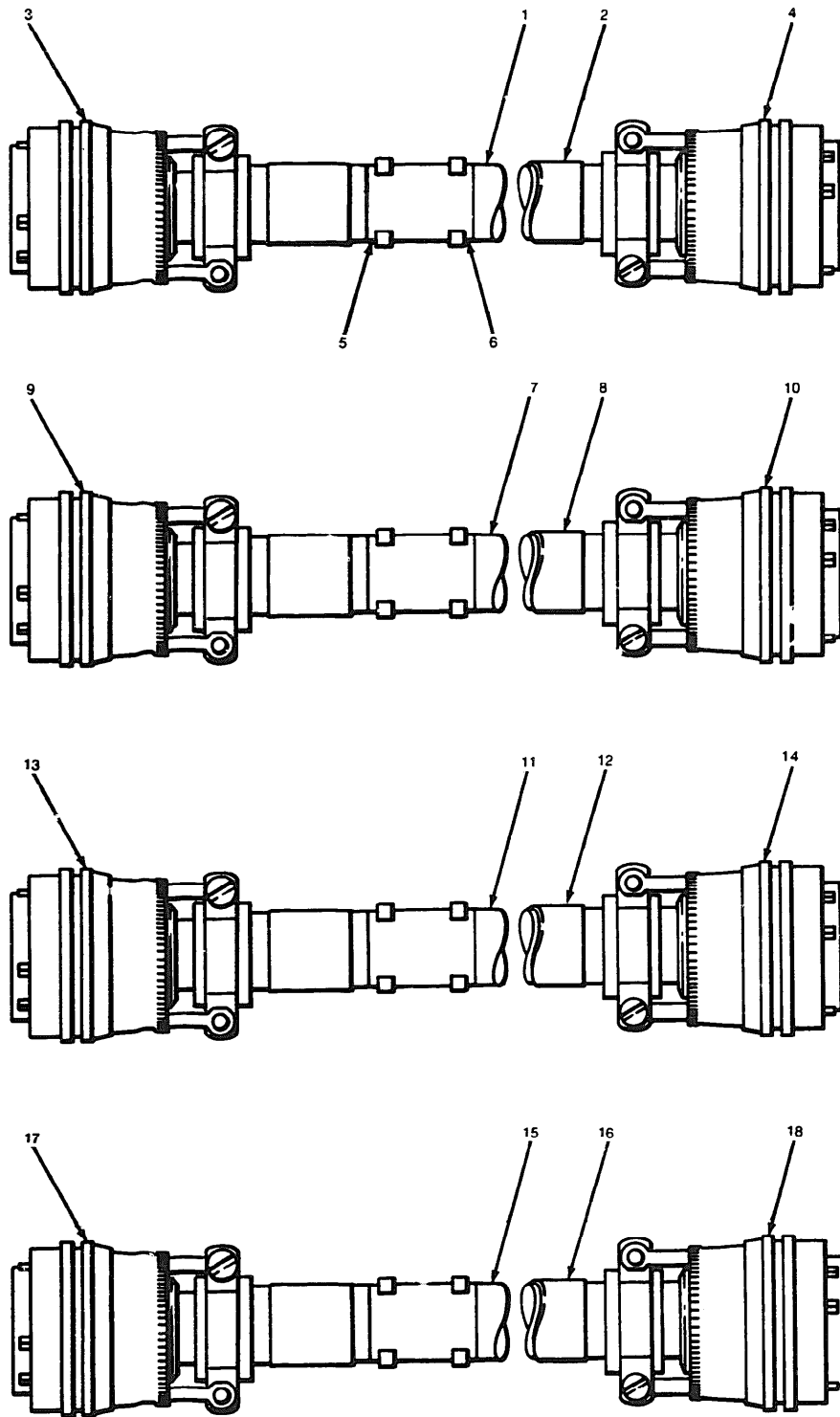
SECTION II REPAIR PARTS FOR DIRECT SUPPORT, GENERAL SUPPORT, AND DEPOT MAINTENANCE (CONTINUED)

(1) SMR CODE	(2) FEDERAL STOCK NUMBER	(3) DESCRIPTION REFERENCE NUMBER & MFR CODE	(4) UNIT OF MEAS	(5) QTY INC IN UNIT	(6) 30-DAY DS MAINT ALLOWANCE			(7) 30 DAY GS MAINT ALLOWANCE			(8) 1 YR ALW PER EQUIP CATGCV	(9) DEPOT MAINT ALW PER 100 EQUIP	(10) ILLUSTRATIONS (10) ITEM NO. OR REFERENCE DESIGNATION
					(6) 1-20	(6) 21-50	(6) 51-100	(7) 1-20	(7) 21-50	(7) 51-100			
P H	6145-155-5283	WIRE, 24AWG, STRD WHT-BRN-GRN 2184948-5E915 (49671)	FT	3				*	*	*	*		
P H	6145-155-5282	WIRE, 24AWG, STRD WHT-BRN-BLU 2184948-5E916 (49671)	FT	4				*	*	*	*		
P H	6145-155-5281	WIRE, 24AWG, STRD WHT-BRN-VIO 2184948-5E917 (49671)	FT	3				*	*	*	*		
P H	6145-155-5293	WIRE, 24AWG, STRD WHT-BRN-GRA 2184948-5E918 (49671)	FT	4				*	*	*	*		
P H	6145-155-5294	WIRE, 24AWG, STRD WHT-RED-DRN 2184948-5E923 (49671)	FT	4				*	*	*	*		
P H	6145-155-5295	WIRE, 24AWG, STRD WHT-RED-YEL 2184948-5E924 (49671)	FT	4				*	*	*	*		
P H	6145-155-5296	WIRE, 24AWG, STRD WHT-RED-GRN 2184948-5E925 (49671)	FT	4				*	*	*	*		
P H	6145-155-5297	WIRE, 24AWG, STRD WHT-RED-BLU 2184948-5E926 (49671)	FT	4				*	*	*	*		
P H	6145-155-5298	WIRE, 24AWG, STRD WHT-RED-VIO 2184948-5E927 (49671)	FT	5				*	*	*	*		
P H	6145-155-5299	WIRE, 24AWG, STRD WHT-RED-GRA 2184948-5E928 (49671)	FT	5				*	*	*	*		
P H		WIRE, 24AWG, STRD WHT-DRN-YEL 2184948-5E934 (49671)	FT	4				*	*	*	*		
P H		WIRE, 24AWG, STRD WHT-DRN-GRN 2184948-5E935 (49671)	FT	5				*	*	*	*		
P H		WIRE, 24AWG, STRD WHT-DRN-BLU 2184948-5E936 (49671)	FT	6				*	*	*	*		
P H		WIRE, 24AWG, STRD WHT-DRN-VIO 2184948-5E937 (49671)	FT	6				*	*	*	*		
P H		WIRE, 24AWG, STRD WHT-DRN-GRA 2184948-5E938 (49671)	FT	6				*	*	*	*		
P H		WIRE, 24AWG, STRD WHT-YEL-GRN 2184948-5E945 (49671)	FT	4				*	*	*	*		
P H		WIRE, 24AWG, STRD WHT-YEL-BLU 2184948-5E946 (49671)	FT	3				*	*	*	*		
P H		WIRE, 24AWG, STRD WHT-YEL-VIO 2184948-5E947 (49671)	FT	2				*	*	*	*		
P H		WIRE, 24AWG, STRD WHT-YEL-GRA 2184948-5E948 (49671)	FT	3				*	*	*	*		
P H		WIRE, 24AWG, STRD WHT-GRN-BLU 2184948-5E956 (49671)	FT	2				*	*	*	*		
P H	6145-577-3420	WIRE, 24AWG, SOLID, BARE 2010105-24 (49671)	FT	96				*	*	*	*		
P H		WIRE, 30AWG, STRD SHLD, WHT-BLK 2183193-311 (49671)	FT	3				*	*	*	*		
P H		WIRE, 30AWG, STRD SHLD, WHT-BRN 2183193-321 (49671)	FT	1				*	*	*	*		
P H		WIRE, 30AWG, STRD SHLD, WHT-RED 2183193-331 (49671)	FT	4				*	*	*	*		
P H		WIRE, 30AWG, STRD SHLD, WHT-DRN 2183193-341 (49671)	FT	1				*	*	*	*		



EL 6625-2411-35P-TM-3

Figure 1. Signal Converter Test Set AN/ASM-416.



EL6625-2411-34P-TM-1

Figure 2. Cable Assemblies.

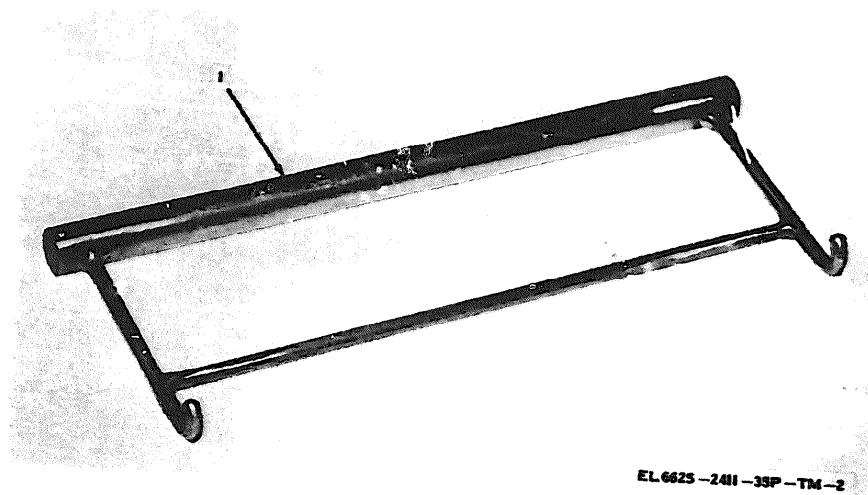
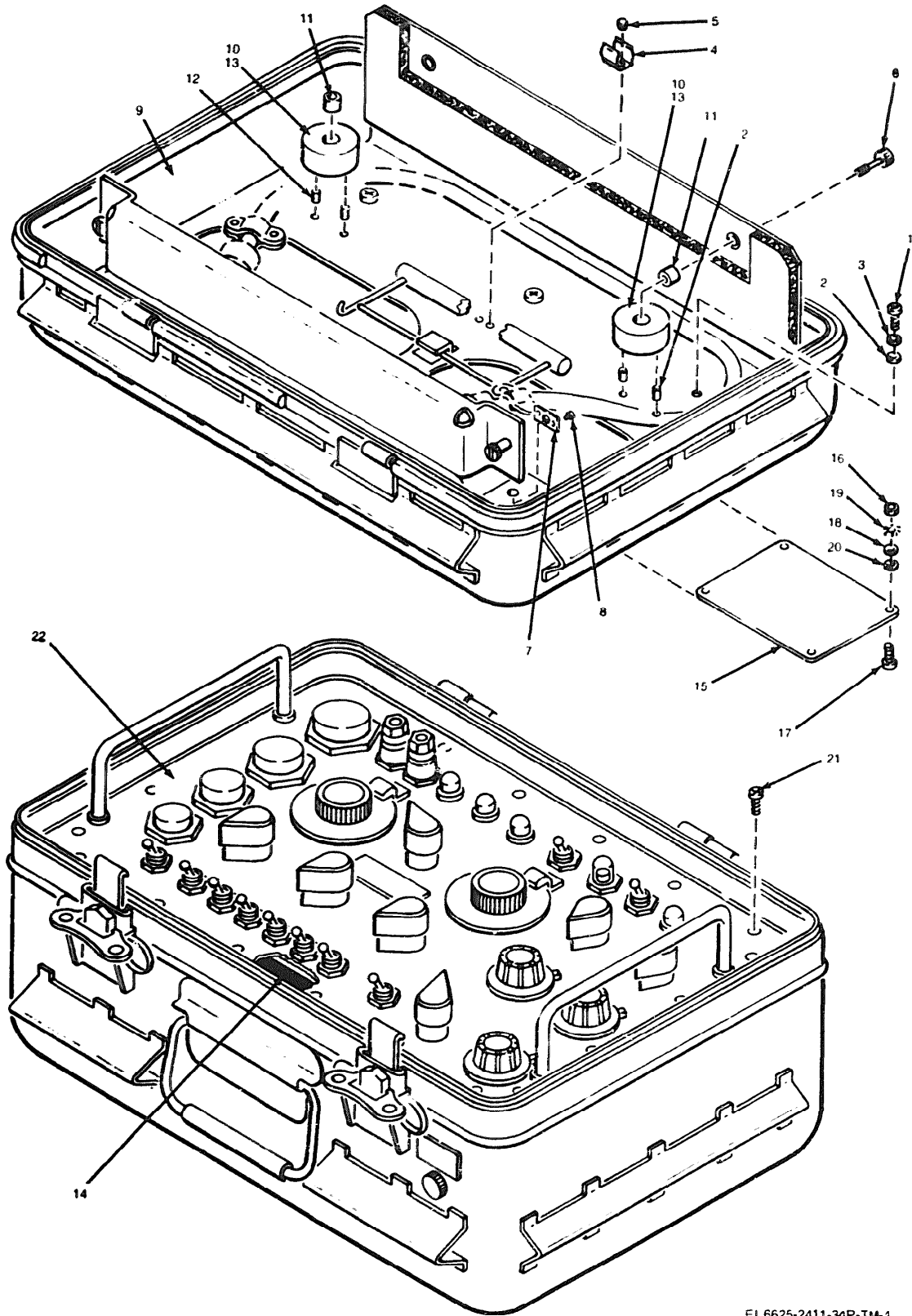
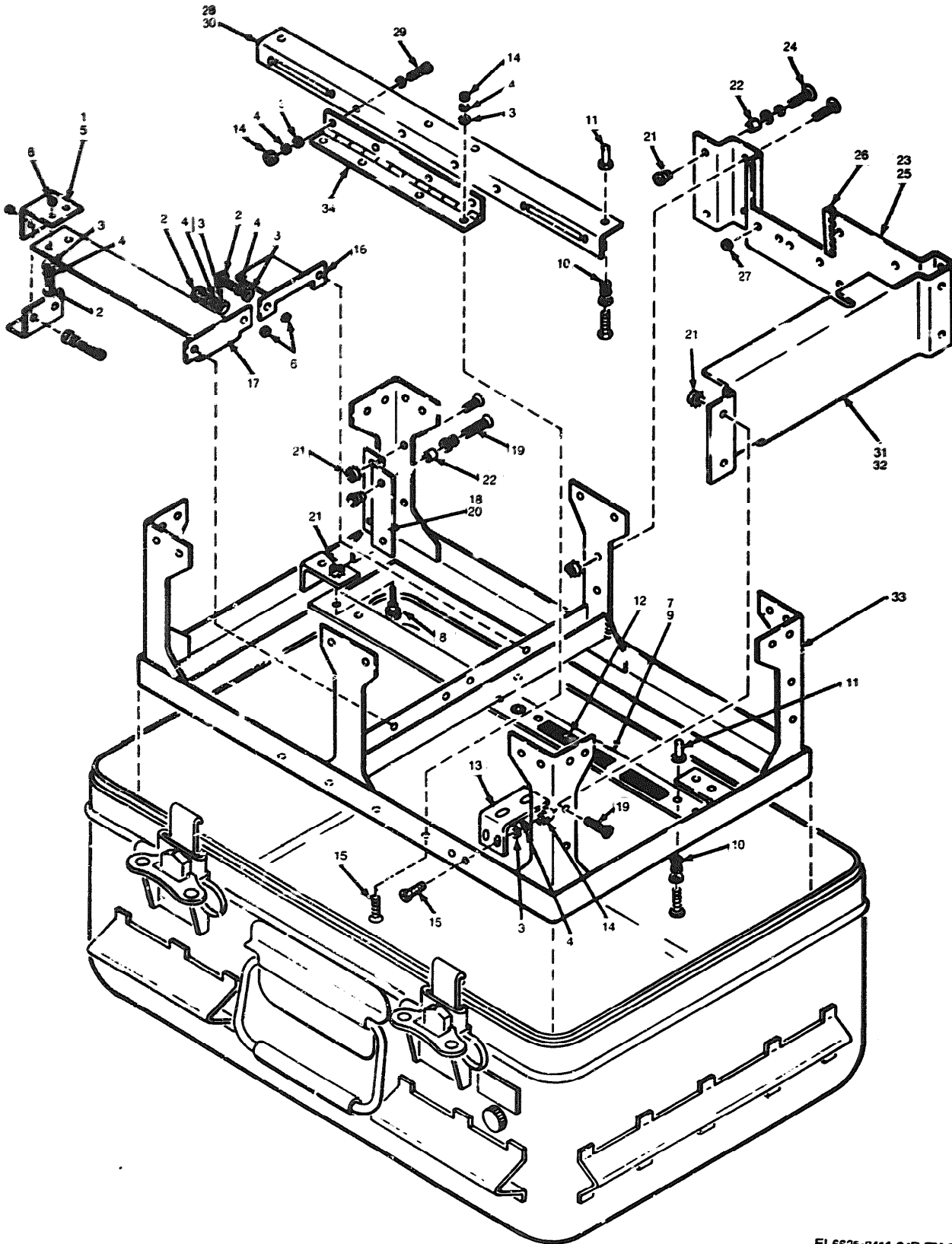


Figure 3. Circuit card extractor



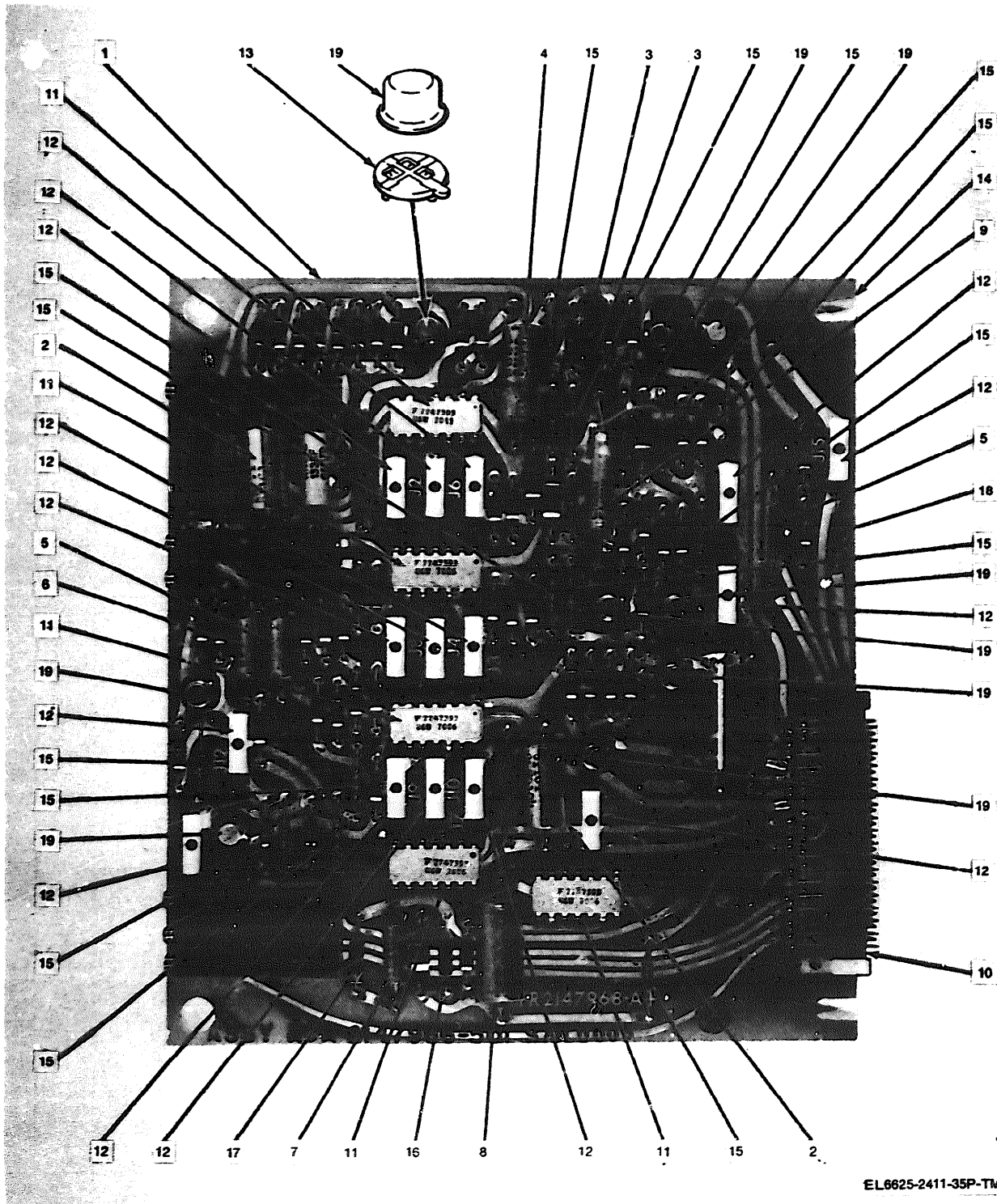
EL6625-2411-34P-TM-4

Figure 4. Top storage cover.



EL6625-2411-34P-TM-5

Figure 5. Main chassis.



EL6625-2411-35P-TM-6

Figure 6. Tach/EGT/Deoverride generator circuit card (solid-state devices, capacitors, and connectors).

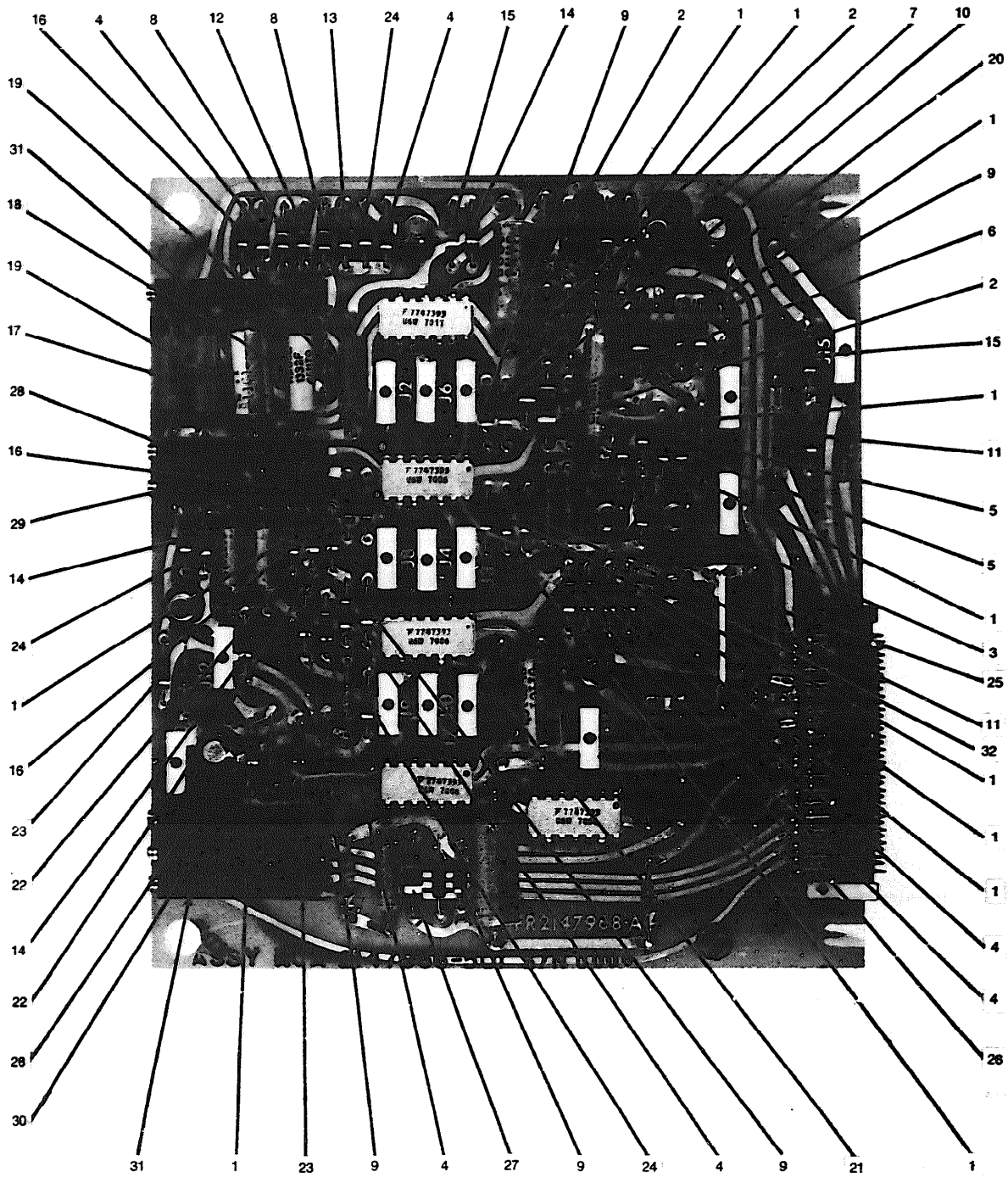
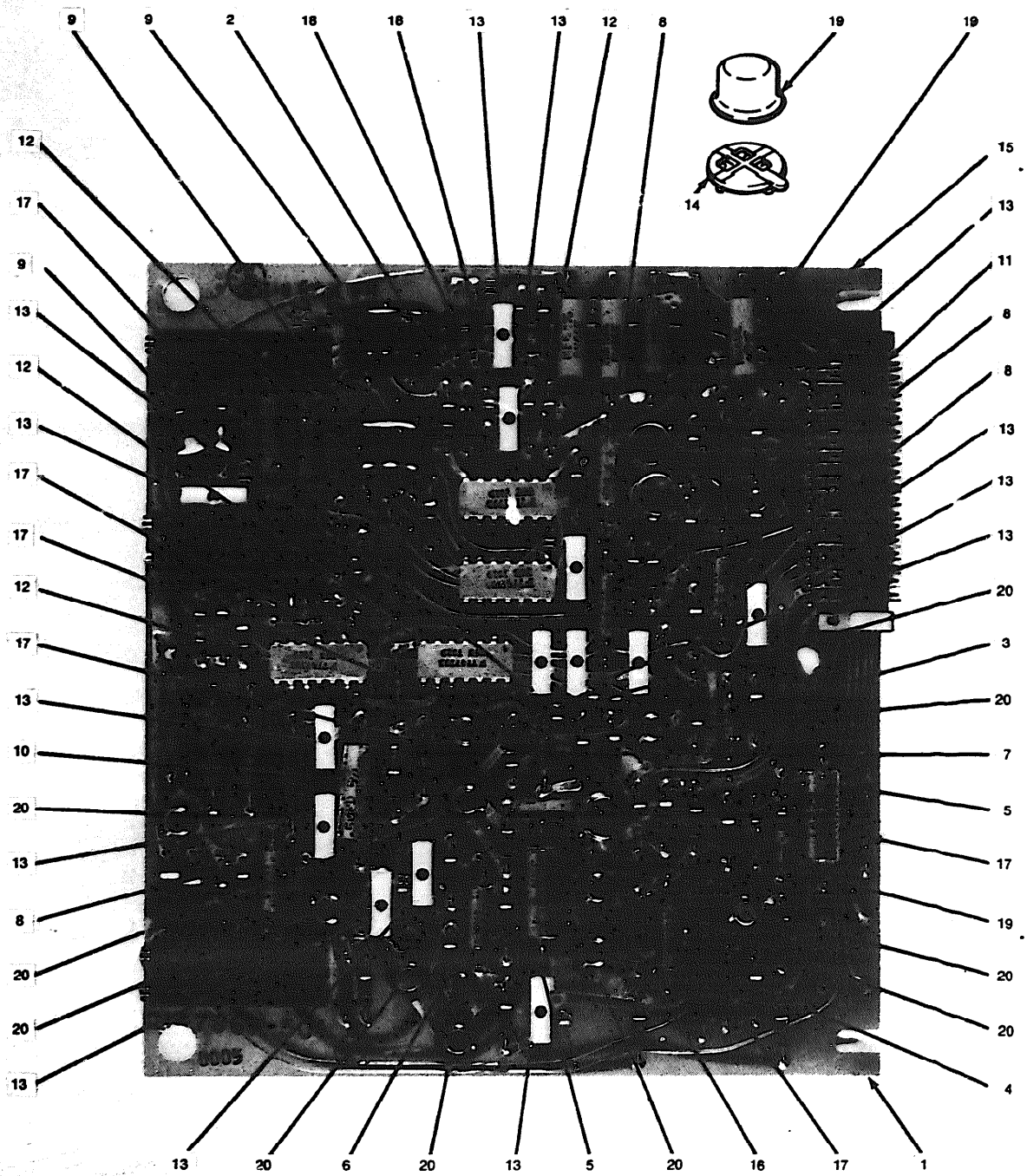


Figure 7. *Tach/EGT/Deoverride generator* circuit card (resistors).



EL6625-2411-35P-TM-8

Figure 8. Hook delay generator and lamp driver 400-Hz, 10 vdc supply circuit card (solid state devices, capacitors, and connectors).

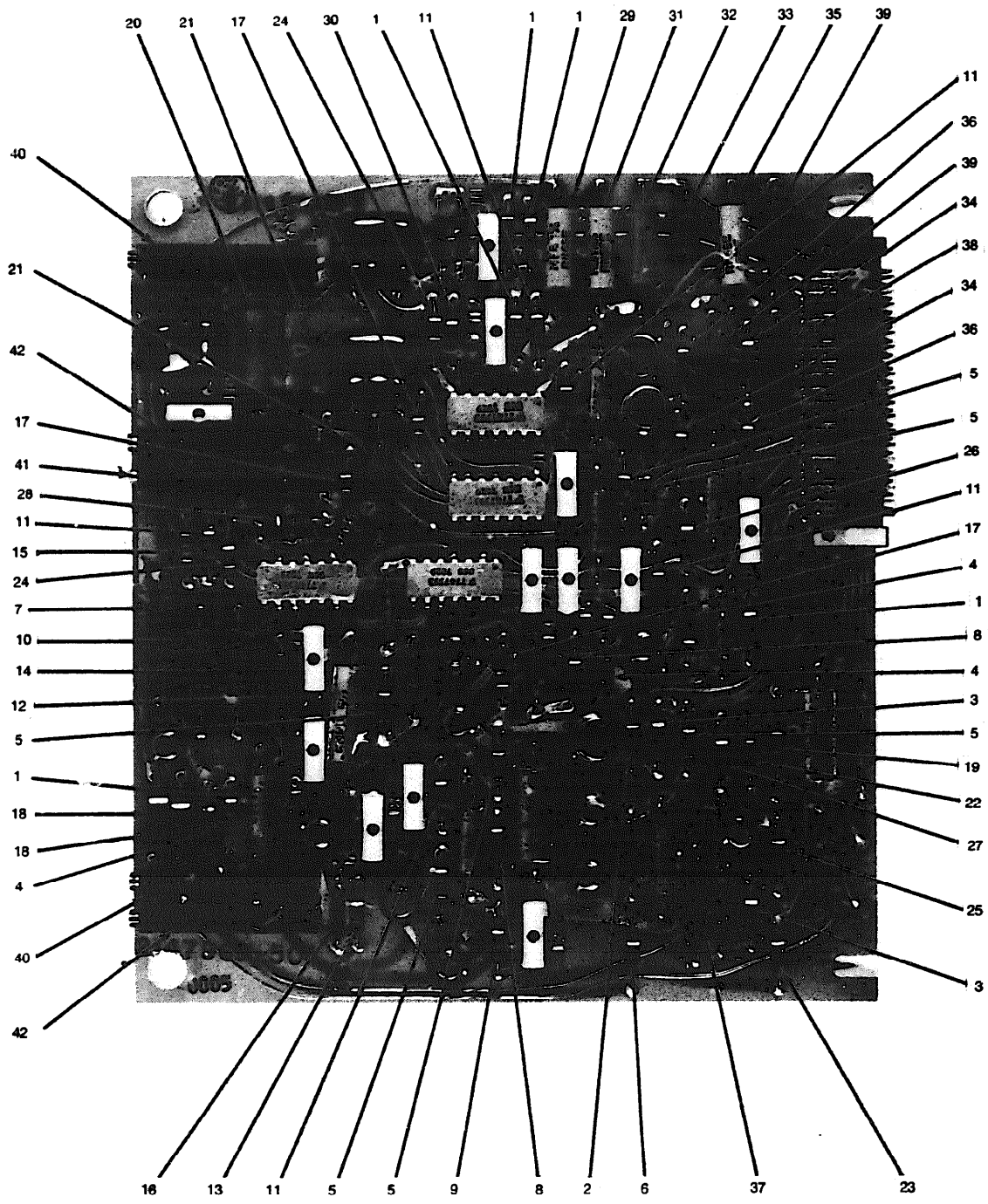
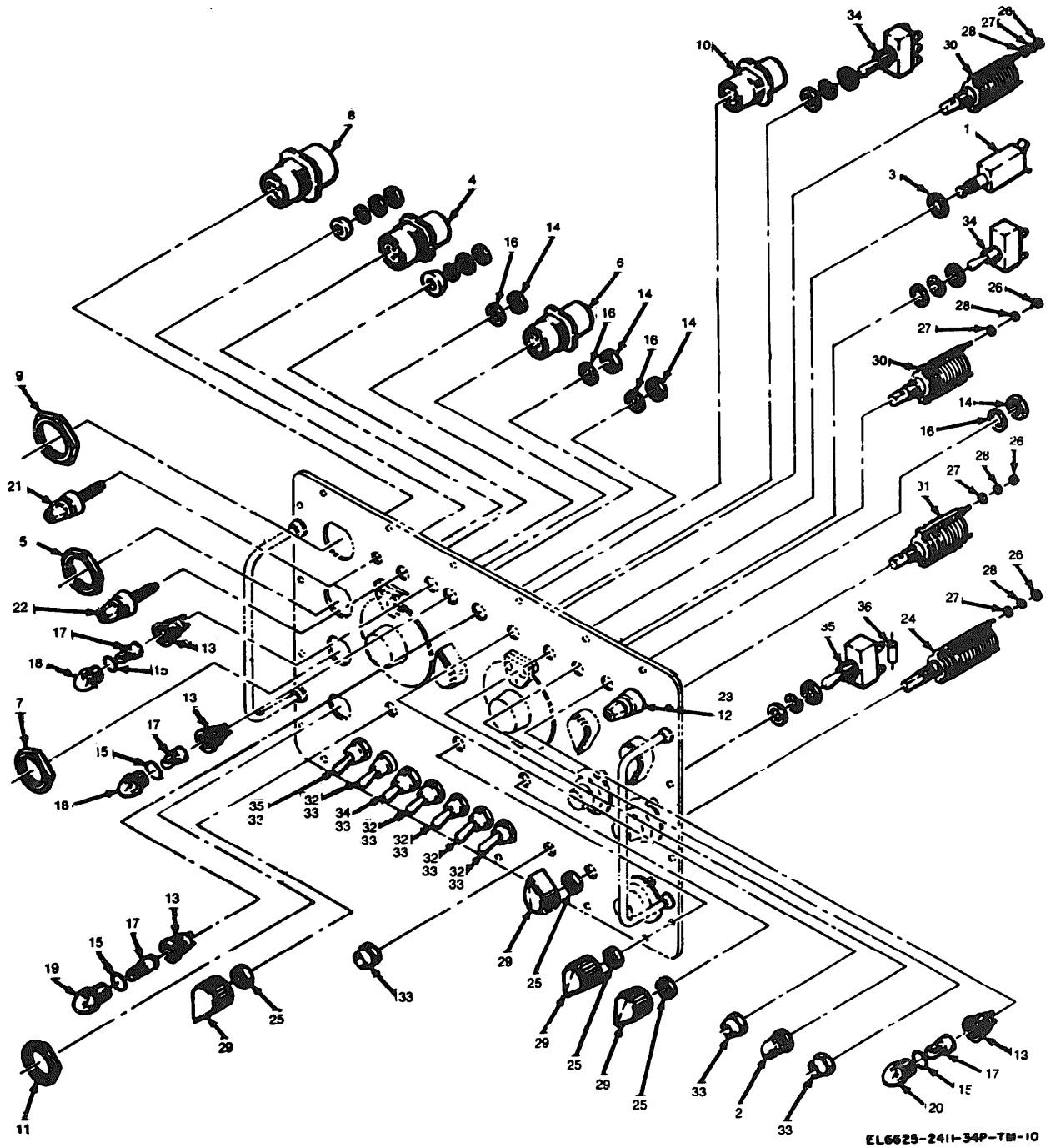


Figure 9. Hook delay generator and lamp driver 400-Hz, 10 vdc supply circuit card (resistors).



EL6625-2411-34P-TM-10

Figure 10. Control panel (lamps, sockets, knobs and switches).

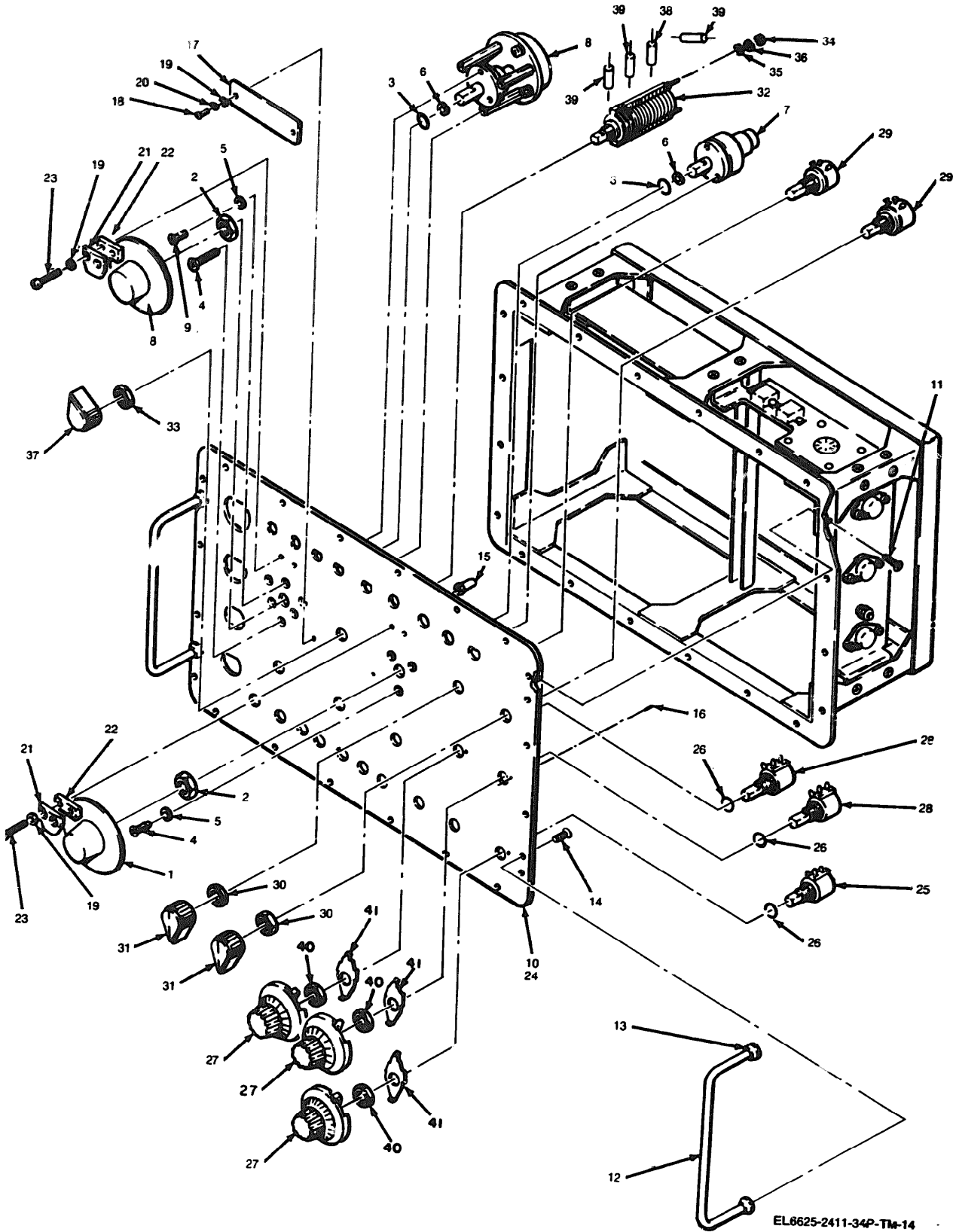
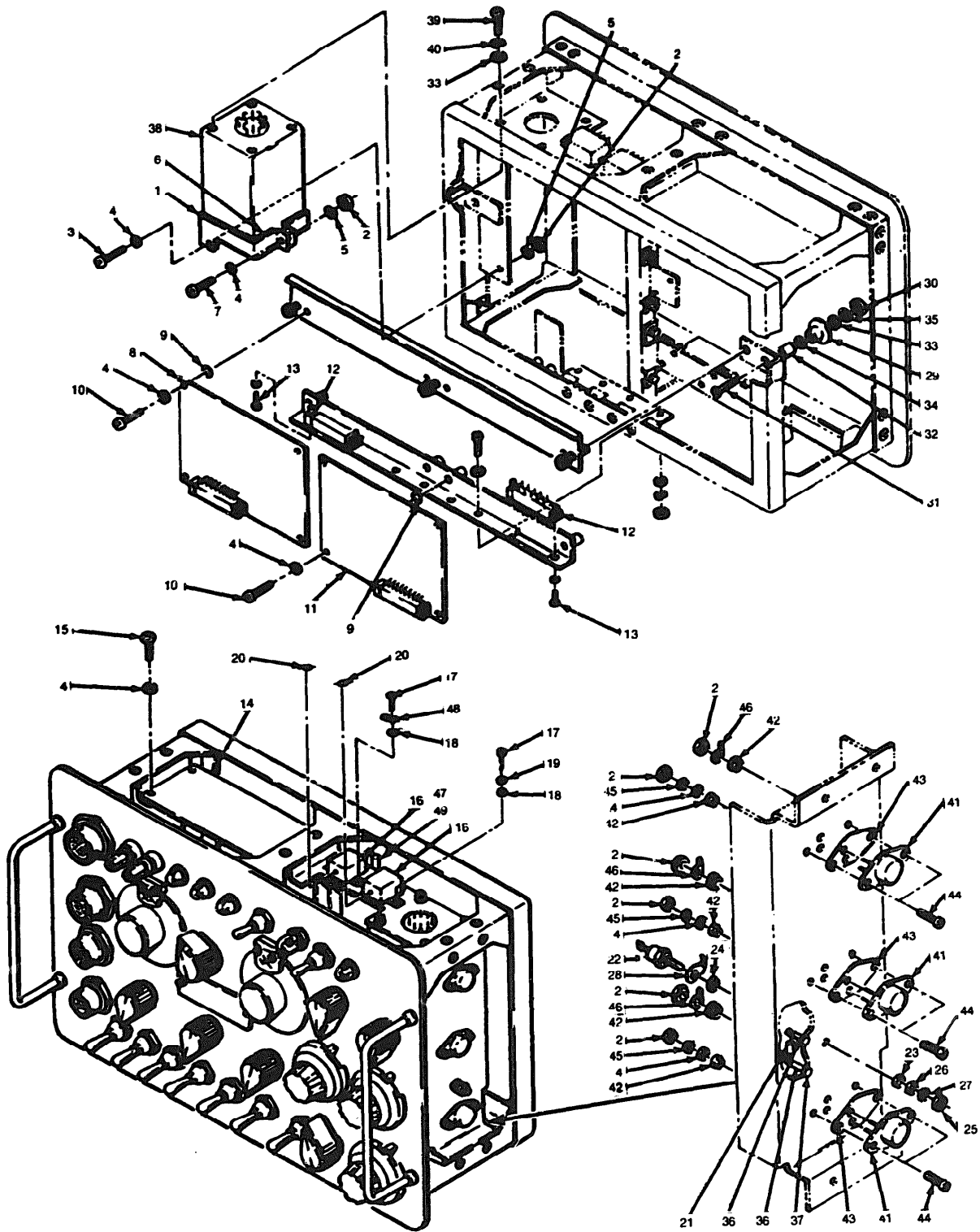


Figure 11. Control panel and chassis attachments (variable controls attaching hardware and knobs).



EL6625-2411-34P-TM-11

Figure 12. Main chassis (solid state devices, relays, transformer, and attaching hardware).

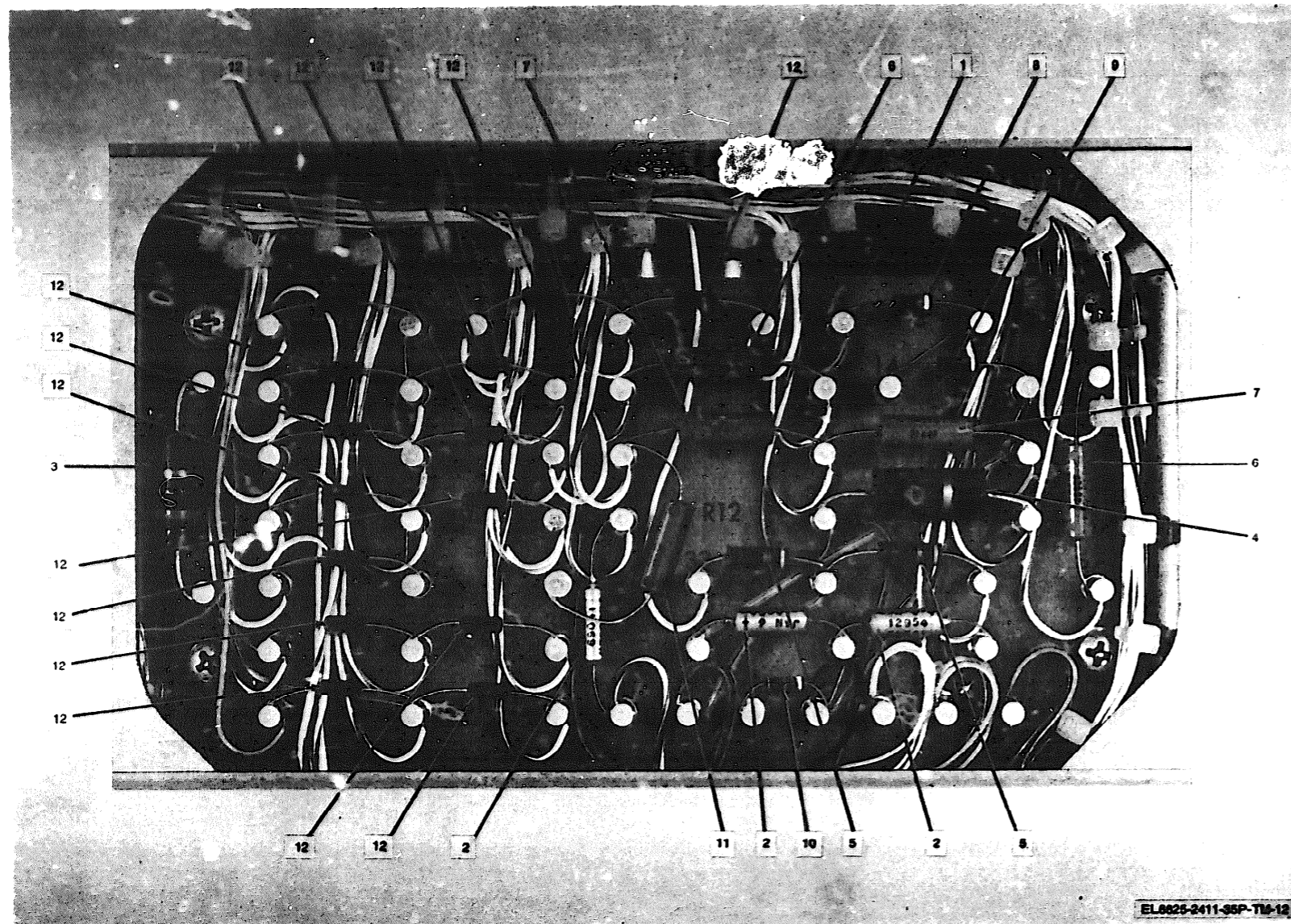


Figure 13 Electrical component board.

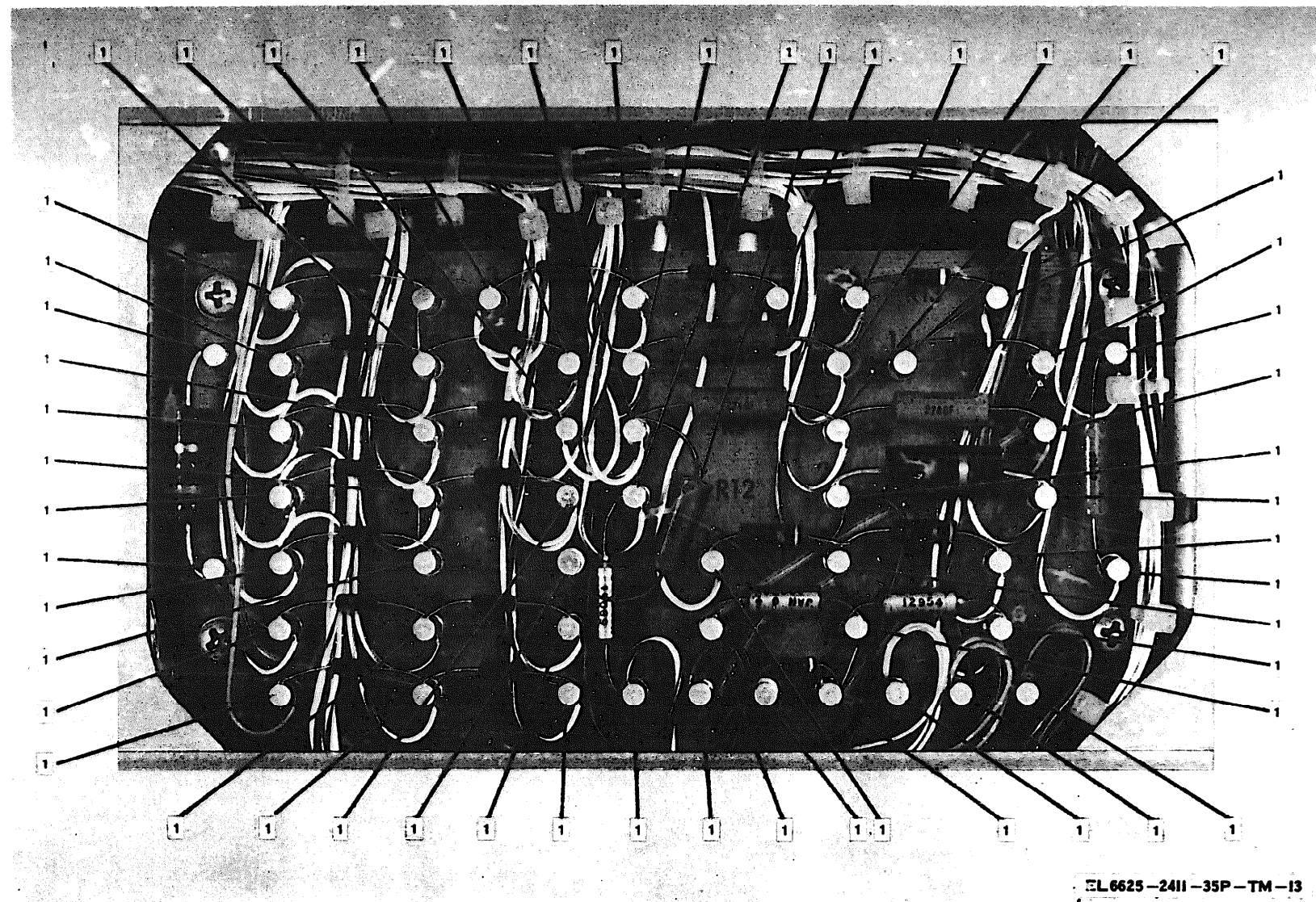
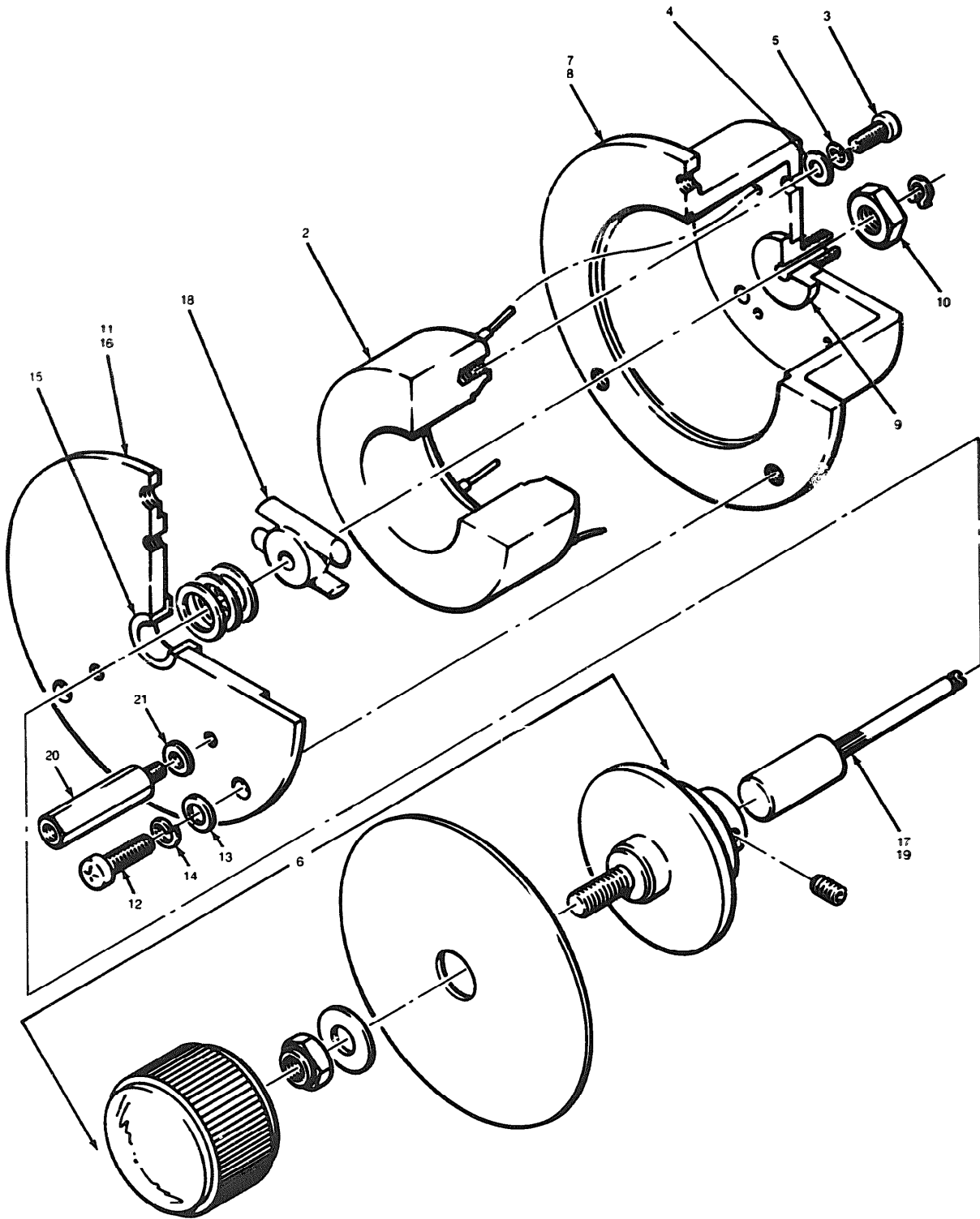
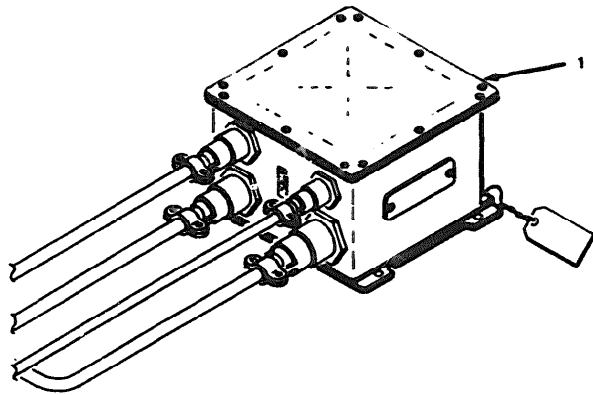


Figure 14. Electrical component board.

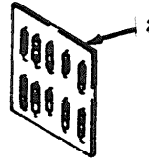


EL6625-2411-34P TM-18

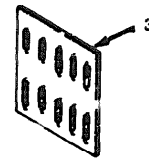
Figure 15. Magnasyn assembly.



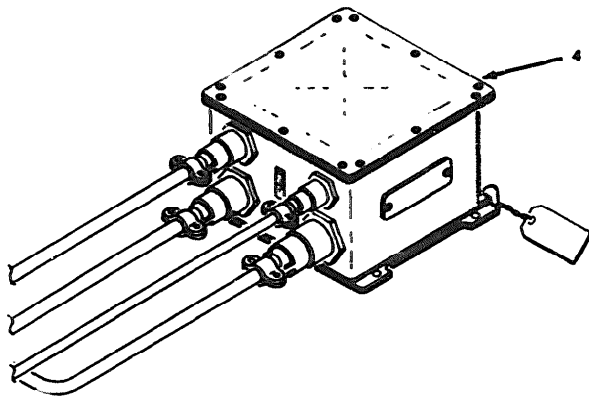
CV-2807(V)2/ASH-19



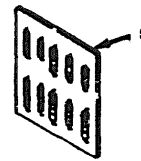
PL 1299/ASH-19



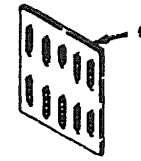
PL 1300/ASH-19



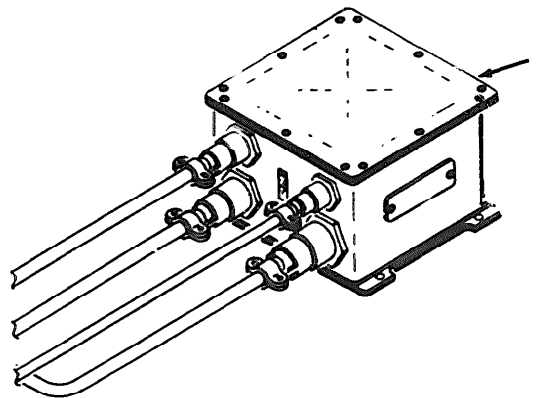
CV-2808(V)1/ASH-19



PL 1301/ASH-19



PL 1302/ASH-19



CV-2809/ASH-19

EL6625-2411-34P-TM-15

Figure 16. Special tools.

SECTION III SPECIAL TOOLS LIST

1 LINE	2 FEDERAL STOCK NUMBER	3 DESCRIPTION	4 UNIT OF MEAS	5 QTY IN UNIT	6 RDY DAILY MAINT ALLOWANCE			7 RDY QS MAINT ALLOWANCE			8 1 YR ALG PER EQUIP CONTR	9 DEPUT MAINT PER EQUIP	10 ILLUSTRATIONS
					11-20	21-50	51-100	1-20	21-50	51-100			
					11	21	51	11	21	51			
	5895-165-2911	CONVERTER, SIGNAL DATA CV-2807(V12)/ASH-19					1	1	2		2	16	1
		CIRCUIT CARD ASSEMBLIES											
	5895-463-4032	PL1299/ASH-19					1	1	2		2	16	2
	5895-463-4040	PL1300/ASH-19					1	1	2		2	16	3
	5895-463-4037	CONVERTER, SIGNAL DATA CV-2808(V11)/ASH-19					1	1	2		2	16	4
		CIRCUIT CARD ASSEMBLIES											
	5895-463-4034	PL1301/ASH-19					1	1	2		2	16	5
	5895-463-4033	PL1302/ASH-19					1	1	2		2	16	6
	5895-463-4039	CONVERTER, SIGNAL DATA CV-2809/ASH-19					1	1	2		2	16	7

SECTION IV INDEX-FEDERAL STOCK NUMBER & REFERENCE NUMBER CROSS-REFERENCE
TO FIGURE & ITEM NUMBER

STOCK NUMBER	FIG NO.	ITEM NO.	STOCK NUMBER	FIG NO.	ITEM NO.	STOCK NUMBER	FIG NO.	ITEM NO.
3110-255-7046	15	11	5310-595-6761	10	27	5330-853-3975	4	20
3120-230-2147	15	15	5310-595-6761	11	35	5340-293-9800	12	32
5120-433-0851	3	1	5310-595-6761	15	4	5340-411-9105	4	12
5305-054-5638	15	3	5310-595-6772	4	2	5340-427-9969	5	34
5305-054-5648	4	17	5310-595-6772	12	26	5340-685-5901	12	49
5305-054-5650	11	18	5310-722-5998	5	3	5340-689-7235	5	27
5305-054-5653	11	23	5310-722-5998	12	4	5340-721-4842	4	4
5305-054-6650	12	15	5310-722-5998	15	13	5340-860-1766	5	6
5305-054-6651	5	2	5310-773-7624	15	21	5340-966-9591	5	22
5305-054-6652	12	37	5310-880-5978	12	33	5355-255-7489	15	6
5305-054-6652	15	12	5310-905-5454	10	16	5355-559-8943	10	29
5305-054-6653	5	29	5310-924-5968	10	3	5355-559-8943	11	37
5305-054-6653	12	3	5310-928-2690	10	28	5355-682-7933	11	27
5305-054-6654	12	44	5310-928-2690	11	36	5355-685-4863	11	31
5305-054-6655	12	7	5310-928-2690	12	17	5905-059-7486	13	6
5305-054-6668	12	39	5310-928-2690	15	5	5905-060-3731	9	39
5305-054-6675	12	31	5310-929-6395	5	4	5905-106-3666	10	36
5305-059-3656	4	1	5310-929-6395	12	5	5905-106-3666	11	38
5305-066-7328	5	19	5310-929-6395	15	34	5905-116-3354	9	4
5305-140-4871	11	4	5310-933-8118	4	19	5905-141-0593	13	5
5305-257-3162	4	21	5310-933-8118	11	20	5905-236-7958	7	26
5350-429-1715	11	9	5310-933-8118	12	19	5905-236-7961	7	18
5350-891-3502	4	6	5310-933-8119	12	40	5905-236-7967	9	20
5305-931-3147	11	14	5310-933-8120	4	3	5905-253-1233	13	4
5305-958-2918	5	15	5310-934-9759	12	30	5905-256-0390	13	3
5305-958-2918	11	11	5310-934-9761	5	14	5905-345-7650	9	19
5350-969-6495	5	24	5310-934-8761	12	2	5905-689-6798	9	41
5310-054-1830	12	35	5310-934-9765	12	25	5905-689-6799	7	28
5310-057-0573	11	19	5310-938-2013	4	16	5905-689-9608	9	42
5310-057-0573	12	18	5310-938-2013	10	26	5905-709-2681	9	7
5310-143-6515	10	9	5310-938-2013	11	34	5905-717-5884	7	31
5310-145-1658	10	5	5310-954-8793	5	21	5905-717-5884	9	40
5310-177-7599	10	11	5310-957-9002	4	7	5905-724-5707	9	32
5310-183-4355	11	5	5320-117-6815	4	5	5905-727-5317	7	16
5310-209-1239	12	27	5320-117-6817	4	8	5905-727-5317	9	2
5310-209-1366	12	45	5325-246-6588	5	8	5905-727-5326	9	34
5310-236-2184	11	15	5330-579-3158	12	9	5950-727-5328	9	26
5310-358-0687	10	7	5330-584-0265	11	26	5905-727-5341	7	9
5310-543-2739	12	34	5330-599-2934	11	3	5905-727-5341	9	8
5310-595-6211	4	18	5330-724-7902	10	15	5905-727-5343	7	10

SECTION IV INDEX-FEDERAL STOCK NUMBER & REFERENCE NUMBER CROSS-REFERENCE
TO FIGURE & ITEM NUMBER (CONTINUED)

STOCK NUMBER	FIG. NO.	ITEM NO.	STOCK NUMBER	FIG. NO.	ITEM NO.	STOCK NUMBER	FIG. NO.	ITEM NO.
5905-727-5343	13	9	5905-853-4933	7	17	5935-256-8606	12	12
5905-727-5340	7	24	5905-866-0245	9	21	5935-724-7567	2	10
5905-727-5352	7	5	5905-880-2351	9	24	5935-724-7577	2	17
5905-727-5354	13	8	5905-901-4016	9	18	5935-724-7592	2	13
5905-727-5355	7	14	5905-902-1477	9	30	5935-725-7723	2	10
5905-727-5355	9	4	5905-903-5147	7	25	5935-726-6487	2	14
5905-728-6645	7	3	5905-904-4336	9	23	5935-726-6504	2	4
5905-728-6645	9	3	5905-913-3073	7	1	5935-765-5988	2	9
5905-728-7804	7	29	5905-913-3073	9	11	5935-780-5761	2	3
5905-730-1489	7	4	5905-941-7638	9	29	5935-821-0921	10	8
5905-730-1489	9	5	5905-964-2378	13	7	5935-878-3248	10	6
5905-730-1490	9	6	5905-984-0429	9	38	5935-882-3769	10	4
5905-730-1495	7	13	5905-988-5442	9	14	5935-994-5164	10	10
5905-730-1498	7	23	5905-988-6154	9	31	5940-269-2219	10	22
5905-730-1500	7	12	5905-989-6500	13	11	5940-356-2493	10	21
5905-730-1512	9	13	5905-990-4152	9	37	5940-480-1288	12	14
5905-730-1514	9	9	5910-018-1418	6	6	5940-682-2477	12	48
5905-761-5409	7	30	5910-067-4413	8	4	5940-725-9498	14	1
5905-764-5985	7	6	5910-078-7227	8	5	5940-752-0188	10	23
5905-764-4985	9	17	5910-105-1977	8	6	5940-827-2653	12	46
5905-764-4986	7	22	5910-111-1693	12	47	5940-948-1237	12	29
5905-764-4986	9	27	5910-194-9261	8	2	5940-964-8756	12	28
5905-767-2418	9	16	5910-229-8333	6	2	5945-829-2994	12	16
5950-767-3220	7	27	5910-851-0464	8	7	5950-463-4095	15	2
5905-768-3662	7	15	5910-857-9192	6	3	5961-059-4464	8	19
5905-768-3662	9	1	5910-934-3141	6	9	5961-199-6008	12	41
5905-768-5772	7	11	5910-935-3511	8	8	5961-226-8584	6	19
5905-768-5772	13	10	5910-935-3511	13	2	5961-226-8584	8	20
5905-768-5922	7	20	5910-954-9766	8	9	5961-842-9864	6	15
5905-768-5931	9	28	5910-998-6949	8	5	5961-842-9864	8	17
5905-774-8300	9	15	5925-902-2355	10	1	5961-852-7549	8	18
5905-774-8310	9	36	5930-233-7171	10	30	5961-856-5454	6	16
5905-775-0623	9	25	5930-233-7173	10	24	5961-806-5454	8	16
5905-775-0633	7	7	5930-236-7948	10	31	5961-892-0734	6	18
5905-776-5313	7	6	5930-539-7013	10	33	5961-892-0734	11	39
5905-782-1503	9	22	5930-655-1508	10	34	5961-892-0734	12	20
5905-851-5667	9	10	5930-655-1923	10	32	5961-892-0734	13	12
5905-851-6389	7	21	5930-661-0995	10	35	5961-934-0138	12	22
5905-851-6389	9	12	5930-823-0482	11	2	5962-236-8185	6	11
5905-851-6390	7	19	5930-823-0573	11	30	5962-234-8185	8	12

SECTION IV INDEX-FEDERAL STOCK NUMBER & REFERENCE NUMBER CROSS-REFERENCE
TO FIGURE & ITEM NUMBER (CONTINUED)

STOCK NUMBER	FIG NO.	ITEM NO.	STOCK NUMBER	FIG NO.	ITEM NO.	STOCK NUMBER	FIG NO.	ITEM NO.			
REFERENCE NO.	MFG CODE	FIG. NO.	ITEM NO.	REFERENCE NO.	MFG CODE	FIG. NO.	ITEM NO.	REFERENCE NO.	MFG CODE	FIG. NO.	ITEM NO.
5970-052-9583	6	13	CK06BX103H	81349	6	3	MS24693C26	96906	5	15	
5970-052-9583	8	14	CL218J151TPE	81349	12	47	MS24693C26	96906	11	11	
5970-133-4840	12	24	CH06FD392GP3	81349	8	9	MS24693C27	96906	5	19	
5970-253-9871	12	23	CSR13D226MM	81349	6	7	MS25081-4	96906	10	3	
5970-410-5964	12	43	CSR13E106KM	81349	8	8	MS25082-8	96906	10	14	
5970-917-3855	5	10	CSR13E106KM	81349	13	2	MS25098-23	96906	10	32	
5970-917-3355	12	42	CSR13E156MM	81349	6	5	MS25100-23	96906	10	34	
5975-682-0306	10	2	CSR13E229KM	81349	8	3	MS 25100-30	96906	10	35	
5975-842-5258	2	6	CSR13E686MM	81349	6	4	MS 775-008	96906	12	9	
5975-987-8829	10	25	CSR13F226KM	81349	8	5	MS28775-012	96906	11	26	
5975-987-8829	11	33	CSR13G226MM	81349	6	8	MS28775-112	96906	11	3	
5990-138-8582	11	7	CSR13G335KM	81349	8	6	MS3114E14-12S	96906	10	10	
6145-155-5303	2	12	CSR13G474KM	81349	8	7	MS3114E16-26S	96906	10	6	
6145-155-5304	2	8	CSR13G475KM	81349	8	4	MS3114E18-32S	96906	10	4	
6145-155-5305	2	16	DF30BC	58474	10	22	MS3114E20-41S	96906	10	8	
6145-162-0235	2	2	DF30GNC	58474	10	23	MS3126F14-12P	96906	2	10	
6145-577-3420	7	32	DF30RC	58474	10	21	MS3126F14-12S	96906	2	17	
6210-176-4928	10	13	D24330	98376	1	1	MS3126F16-26P	96906	2	10	
6240-763-7744	10	17	D7500-6A3	08924	5	8	MS3126F18-20S	96906	2	9	
6620-019-8423	15	18	KMK0632	29372	4	11	MS3126F18-32P	96906	2	4	
6625-434-5623	6	1	LH89-1	81349	10	13	MS3126F18-32S	96906	2	3	
6625-434-5623	12	8	LP57G02P8	03038	11	14	MS3126F20-41P	96906	2	14	
6625-434-5639	8	1	MF7200-06	75237	5	21	MS3126F20-41S	96906	2	13	
6625-434-5639	12	11	MS15795-802	96906	10	27	MS3186-14	96906	10	11	
6625-463-4005	15	7	MS15795-802	96906	11	35	MS3186-16	96906	10	7	
6625-463-4006	15	17	MS15795-802	96906	15	4	MS3186-18	96906	10	5	
6625-463-4014	2	1	MS15795-803	96906	4	18	MS3186-20	96906	10	9	
6625-463-4014	2	1	MS15795-805	96906	5	3	MS35333-121	96906	10	16	
6625-463-4015	2	7	MS15795-805	96906	12	4	MS35333-72	96906	12	34	
6625-463-4016	2	11	MS15795-805	96906	15	13	MS35335-58	96906	12	43	
6625-463-4054	2	15	MS15795-807	96906	12	33	MS35335-60	96906	12	27	
6625-482-6149	11	8	MS15795-808	96906	4	2	MS35338-134	96906	10	28	
6625-482-6149	15	1	MS15795-808	96906	12	26	MS35338-134	96906	11	36	
9320-351-8193	5	12	MS18209-387	96906	10	17	MS35338-134	96906	15	5	
9390-926-1294	5	26	MS20470A03-4	96906	4	3	MS35338-135	96906	4	19	
			MS20470A03-6	96906	4	8	MS35338-135	96906	11	20	
			MS21266-3N	96906	5	26	MS35338-135	96906	12	19	
			MS22073-3	96906	10	1	MS35338-136	96906	5	4	
			MS24693C25	96906	5	24	MS35338-136	96906	12	5	
REFERENCE NO.	MFG CODE	FIG. NO.	ITEM NO.	REFERENCE NO.	MFG CODE	FIG. NO.	ITEM NO.	REFERENCE NO.	MFG CODE	FIG. NO.	ITEM NO.
AB2632R12	02310	4	21	MS20470A03-4	96906	4	3	MS35338-135	96906	4	19
AHS2196	81349	5	12	MS20470A03-6	96906	4	8	MS35338-135	96906	11	20
AN960C616L	88044	11	3	MS21266-3N	96906	5	26	MS35338-135	96906	12	19
CH09A1RA473K	81349	6	9	MS22073-3	96906	10	1	MS35338-136	96906	5	4
CK09BX122K	81349	8	2	MS24693C25	96906	5	24	MS35338-136	96906	12	5

SECTION IV INDEX-FEDERAL STOCK NUMBER & REFERENCE NUMBER CROSS-REFERENCE
TO FIGURE & ITEM NUMBER (CONTINUED)

STOCK NUMBER				STOCK NUMBER				STOCK NUMBER			
REFERENCE NO.	FIG. NO.	ITEM NO.	REFERENCE NO.	FIG. NO.	ITEM NO.	REFERENCE NO.	FIG. NO.	ITEM NO.	REFERENCE NO.	FIG. NO.	ITEM NO.
MFG CODE	FIG. NO.	ITEM NO.	MFG CODE	FIG. NO.	ITEM NO.	MFG CODE	FIG. NO.	ITEM NO.	MFG CODE	FIG. NO.	ITEM NO.
M53338-136	96906	15	14	NA51330C04KB131	80205	11	15	RL075121J	81349	7	22
M53338-137	96906	12	40	NA51330C68106	80205	5	11	RL075121J	81349	9	27
M53338-138	96906	4	3	NA51407N4H2	80205	11	16	RL075122J	81349	7	10
M53338-80	96906	12	35	NA51515H8	80205	11	6	RL075122J	81349	13	9
M533649-224	96906	4	16	NA51598C06Y	80205	4	20	RL075123G	81349	9	23
M533649-224	96906	10	26	NA51742C06R10	80205	12	10	RL075123J	81349	7	23
M533649-224	96906	11	34	NA543DD3-24	80205	12	32	RL075152J	81349	7	24
M533649-264	96906	5	14	NA5620C4	80205	11	19	RL075154J	81349	9	28
M533649-264	96906	12	2	NA5620C4	80205	12	18	RL075181G	81349	9	36
M533649-84	96906	12	30	NA5620C6	80205	15	21	RL075182J	81349	7	5
M533650-304	96906	12	25	NCN451-3	07886	5	27	RL075189J	81349	7	12
M551957-13	96906	12	17	NCN6-2-2=1	07886	5	6	RL075202J	81349	13	8
M551957-14	96906	4	17	NC3030	97539	10	2	RL075222J	81349	7	14
M551957-16	96906	11	18	NT352R0632VC4L	02310	11	4	RL075222J	81349	9	4
M551957-19	96906	11	23	NT521R1032AC5L	02310	11	9	RL075223J	81349	7	15
M551957-26	96906	12	15	NY06-040	08289	5	10	RL075223J	81349	9	1
M551957-27	96906	5	2	NY06-040	08289	12	42	RL075271G	81349	9	22
M551957-28	96906	12	37	NY10-030	08289	12	23	RL075272J	81349	7	3
M551957-28	96906	15	12	N9033-1-4	97539	10	25	RL075272J	81349	9	3
M551957-29	96906	5	29	N9033-1-4	97539	11	33	RL075332J	81349	7	11
M551957-29	96906	12	3	P24-107	87034	10	18	RL075332J	81349	13	10
M551957-30	96906	12	44	P24-108	87034	10	20	RL075333J	81349	9	30
M551957-31	96906	12	7	P24-109	87034	10	19	RL075392G	81349	9	24
M551957-4	96906	15	3	R8D	73138	11	27	RL075472J	81349	7	4
M551957-43	96906	12	39	RCR07G103JS	81349	10	36	RL075472J	81349	9	5
M551957-50	96906	12	31	RCR07G103JS	81349	11	38	RL075473G	81349	9	15
M551958-60	96906	4	1	RCR07G105JS	81349	7	2	RL075512J	81349	9	6
M577068-1	96906	12	48	RCR20G182JS	81349	13	5	RL075561J	81349	9	34
M577068-2	96906	12	46	RC42GF561J	81349	13	4	RL075562J	81349	9	16
M59068-013	96906	10	15	RC42GF681J	81349	13	3	RL075681J	81349	9	26
M591328-2K1B	96906	11	31	RLR07C390GM	81349	9	19	RL075682G	81349	9	25
M591328-2K2B	96906	10	29	RL075101J	81349	7	16	RL075683J	81349	9	13
M591328-2K2B	96906	11	37	RL075101J	81349	9	2	RL075822J	81349	7	13
M39003-01-2304	81349	6	6	RL075102J	81349	7	9	RL075823J	81349	9	9
M5423-02-01	81349	10	33	RL075102J	81349	9	8	RL205102J	81349	9	18
M5423-09-02	81349	11	2	RL075103J	81349	7	1	RL205152J	81349	7	20
M5423-09-1	81349	11	30	RL075103J	81349	9	11	RL205222J	81349	7	27
M5757-10-023	81349	12	18	RL075104J	81349	7	8	RL205471J	81349	7	6
NA51068C06LM	80205	4	7	RL075104J	81349	9	17	RL205561J	81349	7	7

SECTION IV INDEX & REFERENCE NUMBER CROSS-REFERENCE
TO FIGURE & ITEM NUMBER (CONTINUED)

STOCK NUMBER	FIG NO.	ITEM NO.	STOCK NUMBER	FIG NO.	ITEM NO.	STOCK NUMBER	FIG NO.	ITEM NO.
REFERENCE NO.	MFG CODE	FIG. NO.	REFERENCE NO.	MFG CODE	FIG. NO.	REFERENCE NO.	MFG CODE	FIG. NO.
RN65D2740F	81349	13 7	T62P59	03038	4 12	2120724=2	49671	11 22
RN65D4421F	81349	13 11	U6W7747393	07263	6 11	2147909-1	49671	5 32
RN65D4990F	81349	13 6	U6W7747393	07263	8 12	2147909-501	49671	5 31
RN65E1002F	81349	7 21	X1988-2	71279	11 13	2147915-1	49671	5 9
RN65E1002F	81349	9 12	00-8218-036-000-002	91662	6 10	2147915-501	49671	5 1
RN65E1003F	81349	9 21	00-8218-036-000-002	91662	8 11	2147924-1	49671	5 34
RN65E1004F	81349	7 19	00-8218-036-722-001	91662	12 12	2147925-5	49671	11 17
RN65E1020B	81349	7 26	02578	15634	12 38	2147929-1	49671	4 14
RN65E1021F	81349	9 33	03PL504J5N	12517	8 10	2147966-501	49671	6 1
RN65E1021F	81349	12 21	05T0104G5N	12517	6 2	2147966-501	49671	12 8
RN65E1131F	81349	9 32	07294GF55123-1	07294	10 12	2147968-1	49671	6 14
RN65E1332F	81349	7 18	1J52A11-2G07F	27191	10 31	2147969-501	49671	8 1
RN65E1471F	81349	9 7	1J52A11-8G07F	27191	10 30	2147969-501	49671	12 11
RN65E2001F	81349	9 31	1J54A3-16G07F	27191	10 24	2147971-1	49671	8 13
RN65E3012F	81349	7 17	1J54A5-16GF	27191	11 32	2147973-1	49671	15 3
RN65E3482F	81349	9 14	1N1202A	81349	12 22	2147973-501	49671	15 7
RN65E4871F	81349	9 35	1N483B	81349	6 18	2147974-1	49671	15 16
RN65E5113F	81349	9 10	1N483B	81349	11 39	2147974-501	49671	15 11
RN65E6810F	81349	9 29	1N483B	81349	12 20	2147975-501	49671	11 10
RN65E8252F	81349	9 20	1N483B	81349	13 12	2147975-502	49671	11 24
RN65E9091F	81349	7 25	1N754A	81349	8 18	2147976-1	49671	15 19
RT12C2P102	81349	7 31	1N821	81349	6 16	2147976-501	49671	15 17
RT12C2P102	81349	9 40	1N821	81349	8 16	2147977-1	49671	15 9
RT12C2P103	81349	9 42	1N827	81349	6 17	2147977-2	49671	15 15
RT12C2P201	81349	7 29	1N914	81349	6 15	2147978-1	49671	5 30
RT12C2P202	81349	7 30	1N914	81349	8 17	2147978-501	49671	5 28
RT12C2P203	81349	9 41	100-200-6=6	99378	4 4	2147982-1	49671	4 15
RT12C2P502	81349	7 28	10109DAP	07047	6 13	2147983-5	49671	4 13
RW69V1R0	81349	9 39	10109DAP	07047	8 14	2147983-501	49671	1 2
RW69V1R8	81349	9 37	1041781032-6	06540	11 12	2147983-502	49671	4 9
RW69V271	81349	9 38	1246-18	71279	5 22	2147983-503	49671	4 10
SE12XC07	81349	14 1	2N2218	81349	8 19	2147984-501	49671	2 1
S5T4	06383	2 6	2N2222	81349	6 19	2147985-501	49671	2 7
S10-1380	04569	2 12	2N2222	81349	8 20	2147986-501	49671	2 11
S10-1381	04569	2 8	2N3055	81349	12 41	2147987-501	49671	2 15
S10-1382	04569	2 16	2010841-368	49671	12 6	2147988-1	49671	5 9
S10-1383	04569	2 2	2120718-1	49671	5 20	2147988-501	49671	5 7
S24	81349	7 32	2120719-501	49671	5 18	2147989-1	49671	13 1
TC228	59730	2 5	2120724-1	49671	11 21	2147989-501	49671	12 14

SECTION IV INDEX-FEDERAL STOCK NUMBER & REFERENCE NUMBER CROSS-REFERENCE
TO FIGURE & ITEM NUMBER (CONTINUED)

STOCK NUMBER	FIG NO.	ITEM NO.	STOCK NUMBER	FIG NO.	ITEM NO.	STOCK NUMBER	FIG NO.	ITEM NO.
REFERENCE NO.	MFG CODE	FIG. NO.	ITEM NO.					
2147990-501	49671	4	22					
2147990-502	49671	5	33					
2147993-501	49671	11	8					
2147993-501	49671	15	1					
2147995-501	49671	3	1					
2147996-1	49671	5	13					
2147997-1	49671	5	16					
2147998-1	49671	5	17					
2148131-1	49671	12	1					
2148132-1	49671	5	25					
2148132-501	49671	5	23					
2149657-1	49671	15	10					
2188431-1	49671	11	7					
3-8-6	93987	12	49					
343551-102	80249	11	29					
39005926-102	80249	11	25					
39005926-502	80249	11	28					
4035-1E2 3-451L	08730	15	6					
43-02-10	13103	12	24					
43-03-3	13103	12	43					
4535-8-090INE2 3-451L	08730	11	1					
486043-13	49671	12	36					
5008	11452	12	29					
51-18-206-24	94222	4	6					
626-10	79963	12	28					
8041-1569-1	91506	6	12					
8041-1569-1	91506	8	13					
9023000040	91662	12	13					
9742550632-7	06540	15	20					
985007061	97424	15	18					
985009566	97424	15	2					

By Order of the Secretary of the Army:

Official:

VERNE L. BOWERS,
Major General, United States Army,
The Adjutant General.

W. C. WESTMORELAND,
General, United States Army,
Chief of Staff.

Distribution:

To be distributed in accordance with DA Form 12-36 (qty rqr block No. 197), Direct/General Support requirements for avionics literature, AN/ASH-19.

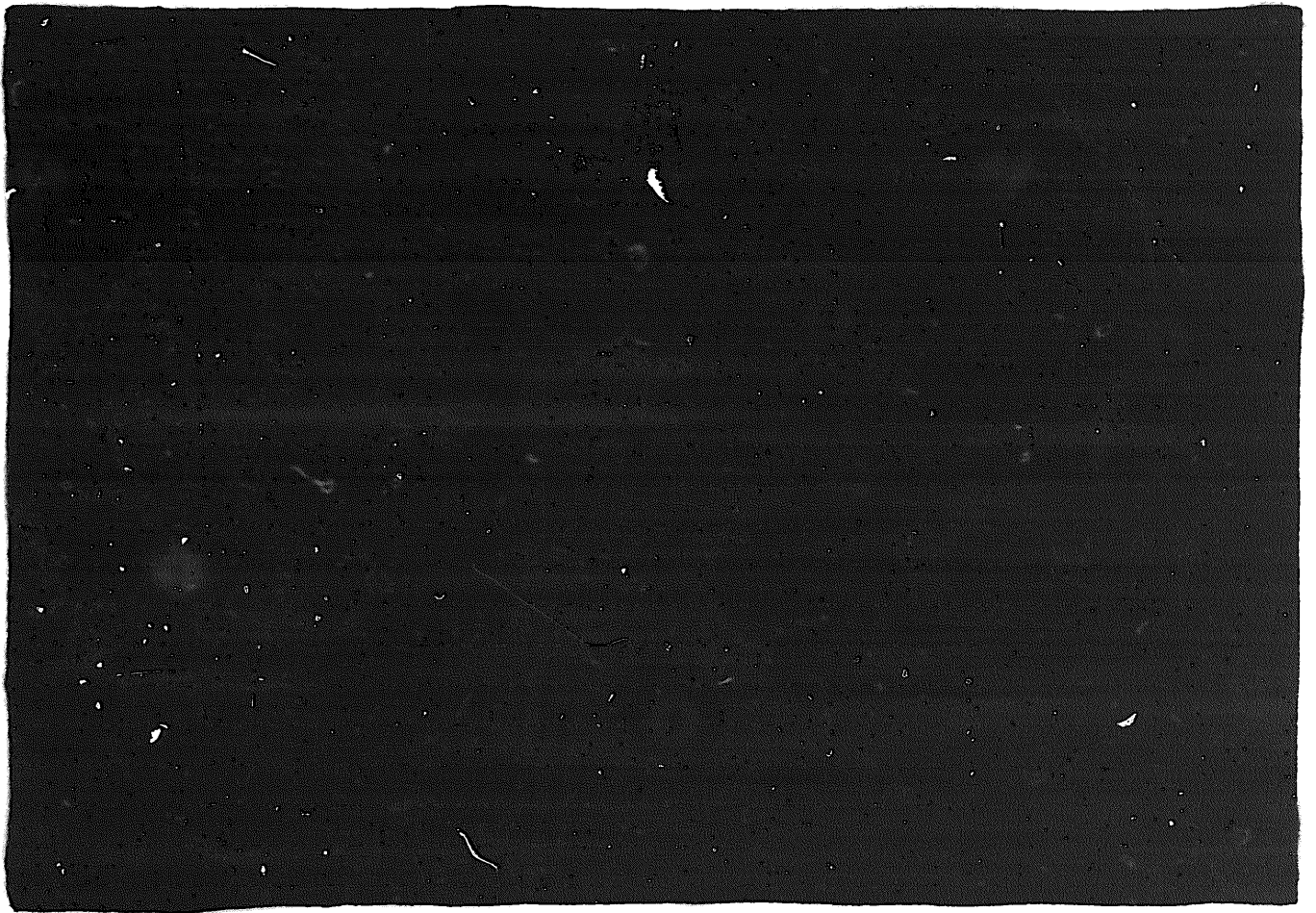
TM11-6625-2411-34P TEST SET, SIGNAL CONVERTER AN/ASM-416-1972

END

12-25-82

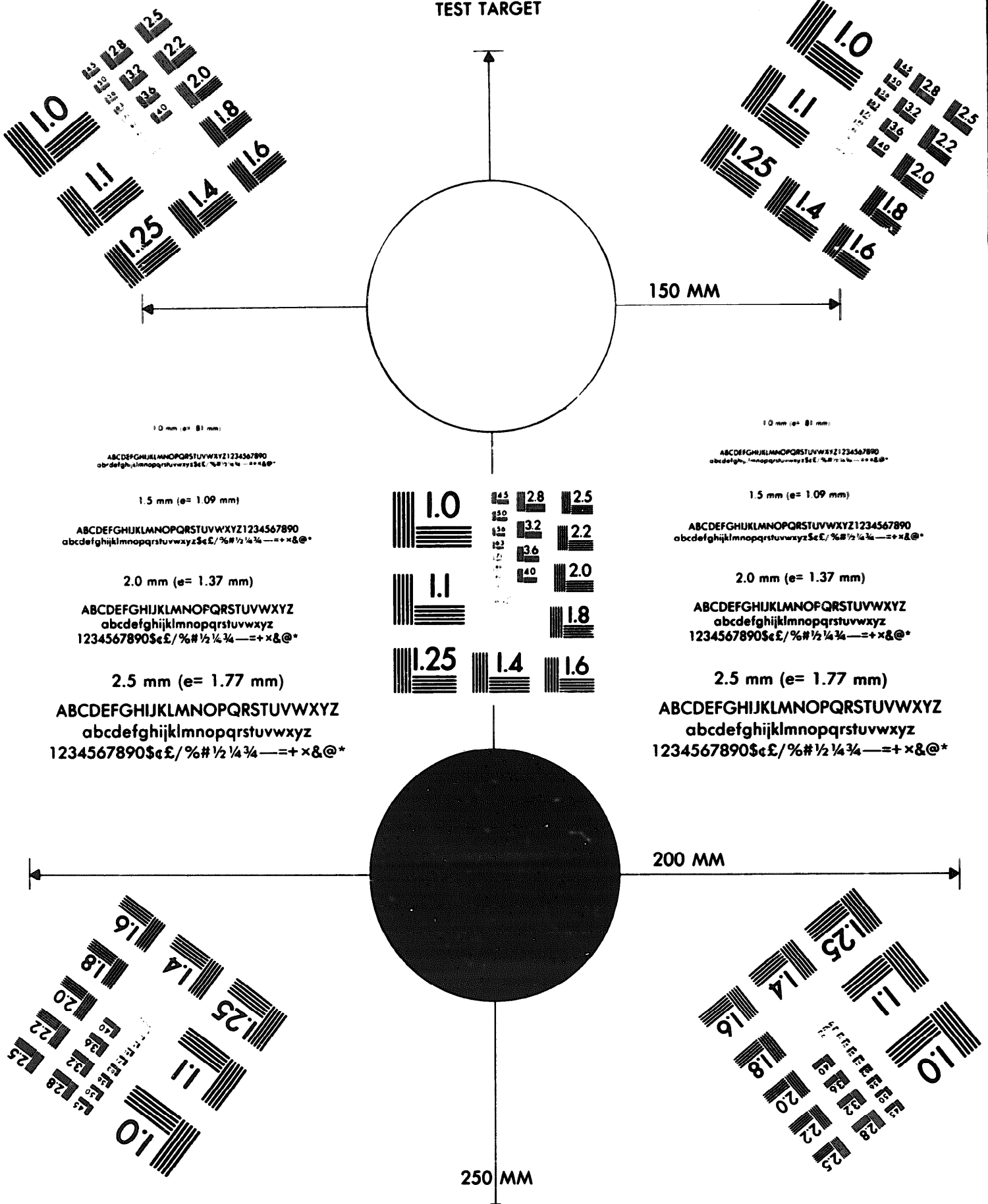
DATE





DEPARTMENT OF THE ARMY

MICROFORM
TEST TARGET



1.0 mm (e= 81 mm)

ABCDEFGHIJKLMN OPQRSTUVWXYZ 1234567890
abcdefghijklmnopqrstu vwxyz \$%& /%# 1/2 1/4 3/4 — = + x & @ *

1.5 mm (e= 1.09 mm)

ABCDEFGHIJKLMN OPQRSTUVWXYZ 1234567890
abcdefghijklmnopqrstu vwxyz \$%& /%# 1/2 1/4 3/4 — = + x & @ *

2.0 mm (e= 1.37 mm)

ABCDEFGHIJKLMN OPQRSTUVWXYZ
abcdefghijklmnopqrstu vwxyz
1234567890 \$%& /%# 1/2 1/4 3/4 — = + x & @ *

2.5 mm (e= 1.77 mm)

ABCDEFGHIJKLMN OPQRSTUVWXYZ
abcdefghijklmnopqrstu vwxyz
1234567890 \$%& /%# 1/2 1/4 3/4 — = + x & @ *

1.0 mm (e= 81 mm)

ABCDEFGHIJKLMN OPQRSTUVWXYZ 1234567890
abcdefghijklmnopqrstu vwxyz \$%& /%# 1/2 1/4 3/4 — = + x & @ *

1.5 mm (e= 1.09 mm)

ABCDEFGHIJKLMN OPQRSTUVWXYZ 1234567890
abcdefghijklmnopqrstu vwxyz \$%& /%# 1/2 1/4 3/4 — = + x & @ *

2.0 mm (e= 1.37 mm)

ABCDEFGHIJKLMN OPQRSTUVWXYZ
abcdefghijklmnopqrstu vwxyz
1234567890 \$%& /%# 1/2 1/4 3/4 — = + x & @ *

2.5 mm (e= 1.77 mm)

ABCDEFGHIJKLMN OPQRSTUVWXYZ
abcdefghijklmnopqrstu vwxyz
1234567890 \$%& /%# 1/2 1/4 3/4 — = + x & @ *